

donlife



For Students

April 8, 2026



PFW Honors Top 50, Top 10 Graduate Students, Exemplars

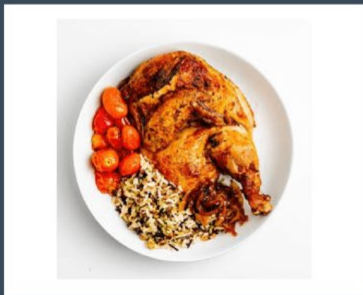
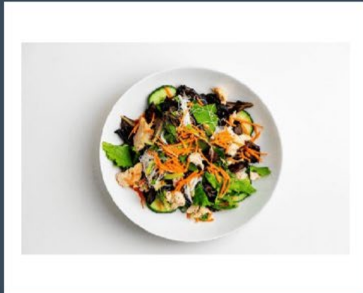
Purdue University Fort Wayne has chosen this year's Top 50 students—undergraduate juniors and seniors who have demonstrated strong academic achievement, leadership, and service—and introduced a new honor: the Top 10 graduate students, celebrated for their exceptional academic performance and dedication to their field of study.

The university also celebrates its Exemplars, selected by their colleges and schools for achieving the highest levels of excellence in their disciplines and for making meaningful contributions through leadership and service.

Congratulations to all of this year's honorees for this well-deserved recognition—their hard work and impact make a difference across the Purdue Fort Wayne community.

VIEW THE HONOREES

Share the story:



PFW Sampling Food Options at Student Housing on the Waterfield Campus

Purdue University Fort Wayne students living in Student Housing on the Waterfield Campus will soon have new meal options close to home. The Crave will open soon at Cole Clubhouse in the evenings, offering students a variety of cuisines, according to Marcus Weemes, executive director of Housing and Dining Services.

“There will be three options that will be served,” Weemes said. “It could have a burger menu, a Mediterranean option, or a ramen station. And then each month we will replace one option with something different so that there’s a variety and to keep things fresh.”

The rotations may feature options like pizza, Italian, barbecue, or Mexican. Vegetarian and vegan options will also be available.

Plans for The Crave started more than a year ago, and the Purdue Board of Trustees approved the contract in December. Construction has already begun. The plan, Weemes said, is to launch a soft open right before the spring semester ends so the operation will be fully prepared and operational when the fall semester begins.

The proposed hours would be from 4 p.m. to 10 or 11 p.m. The Crave is part of a national restaurant chain and will be run by Fresh Ideas, PFW's dining services provider, similar to Einstein Bros. Bagels in Kettler Hall. This also provides opportunities for student employment.

READ MORE

Share the story:



Global Perspectives: PFW Senior Lilian Frank Models the Study Away Experience

Lilian Frank might be searching for a job, and she has a long list of worldwide references.

The senior is an ideal ambassador and role model for Purdue University Fort Wayne's **Study Away** program, which encourages students to spend a semester in an international country. Frank has studied in England and Japan over the previous two semesters, spending summers in Italy and Korea. She has visited more than a dozen countries and is eager to continue her travels.

"Do it! Do it! Do it! Do it! Do it! Do it!" Frank gushed. "I feel like everyone I've ever met who

studies abroad says it is the highlight of their college experience. I know for a lot of people it can be hard to do because it is expensive, but there are so many resources out there if you take 5 or 10 minutes a day to look, you can seriously find lots of options.”

That’s how Frank paid for her travels, utilizing PFW’s **ScholarshipUniverse** tool. Before she started looking, Frank had no idea what aid options were available. Sometimes she found resources from the countries she wanted to visit, from businesses looking to encourage tourism, as well as the U.S. government. She’s currently considering international graduate studies after she graduates in May as an English major with a concentration in linguistics, a minor in art and design, and a certificate in international studies.

[READ MORE](#)

Share the story:



Microsoft Authenticator to Replace Duo Mobile for MFA

Starting May 29, Purdue IT will adopt Microsoft multi-factor authentication for all university accounts systemwide. This will make MFA process easier for users and eliminate the need for Duo Mobile.

All Purdue Fort Wayne students, faculty, and staff are asked to download Microsoft Authenticator and enroll with Microsoft MFA if they have not already done so.

Once the Microsoft MFA change takes place, all users will see a new login screen for local applications that are currently accessible via the Central Authentication Service, or CAS. This will also be the case for Purdue system applications, including email and those protected by Purdue Single Sign-On such as SuccessFactors, Brightspace, and others.

No action is required for users who have already enrolled in Microsoft MFA with their @purdue.edu account. After the switch, but not before, users may delete Duo from their mobile devices unless it is needed for external purposes.

[READ MORE](#)

There's always plenty to do at Purdue Fort Wayne. To find your favorites—or discover new activities—check the full [events calendar](#) often to see what's happening on campus.

APRIL

8

Today, 9 a.m.–4 p.m.

SAB Spring Duck Hunt 2026

The hunt is on! Colorful ducks are hidden in buildings all across campus. Keep your eyes peeled, because finding a duck means you win an awesome prize...

APRIL

10

Fri., 7–8 p.m.

Club Sports Information Session (Virtual)

Want to learn more about our Club Sports program, explore our new degrees in Sports Management and Sports Leadership, and meet our club captains and coaches? Join us online for this information session...

APRIL

14


Tues., 7–9 p.m.

SAB Game Show: Wheel of Fortune

Spin to win! Test your puzzle-solving skills for a chance to take home some big prizes! It's going to be an unforgettable night of friendly competition and lots of fun...

Mastodon Moments

Seen and noted around campus. Monitor our university social feeds for more great moments of Mastodon life.





On Thursday, the Division of Enrollment Management and the Student Experience created a space in Walb Student Union where everyone was encouraged to take a moment to make a mindful call to connect with a special someone. An added bonus? A fresh box of marshmallow Peeps!

[Athletics](#)



[Events Calendar](#)



[News Center](#)



[Don Life Archive](#)



Don Life is an official university communication sent weekly on Wednesday to all currently enrolled students. Don Life Special Edition is a supplement to the regularly scheduled newsletter. It covers breaking news and time-sensitive information directly related to university operations.

PURDUE UNIVERSITY
FORT WAYNE

