



Michael Kirchner and Kim O'Connor are members of the MOBTS board of directors and conference site co-chairs.

Major Academic Conference Bringing 200 Scholars to Campus in June

The last time Purdue University Fort Wayne was scheduled to host the Management & Organizational Behavior Teaching Society's annual conference in 2020, the pandemic forced the event—like just about everything else—to move online. PFW gets a second in-person chance June 10-13, and organizers can't wait.

"We're excited to welcome an awful lot of people to a city they're likely never going to have the chance to visit," said Michael Kirchner, associate professor and graduate program director in PFW's Department of Organizational Leadership. "It's a great opportunity to show off our

community and the campus.”

The **conference** will welcome about 200 participants from across the world and include roughly **100 sessions** held at Walb Student Union and the Liberal Arts Building. Kirchner and Kim O'Connor, PFW's associate vice chancellor for teaching and learning, are members of the MOBTS board of directors and conference site co-chairs. They've been developing the event program for the past two years. That includes finding volunteers, setting up social activities, and providing transportation from Student Housing on the Waterfield Campus, where most participants will stay.

[READ MORE](#)



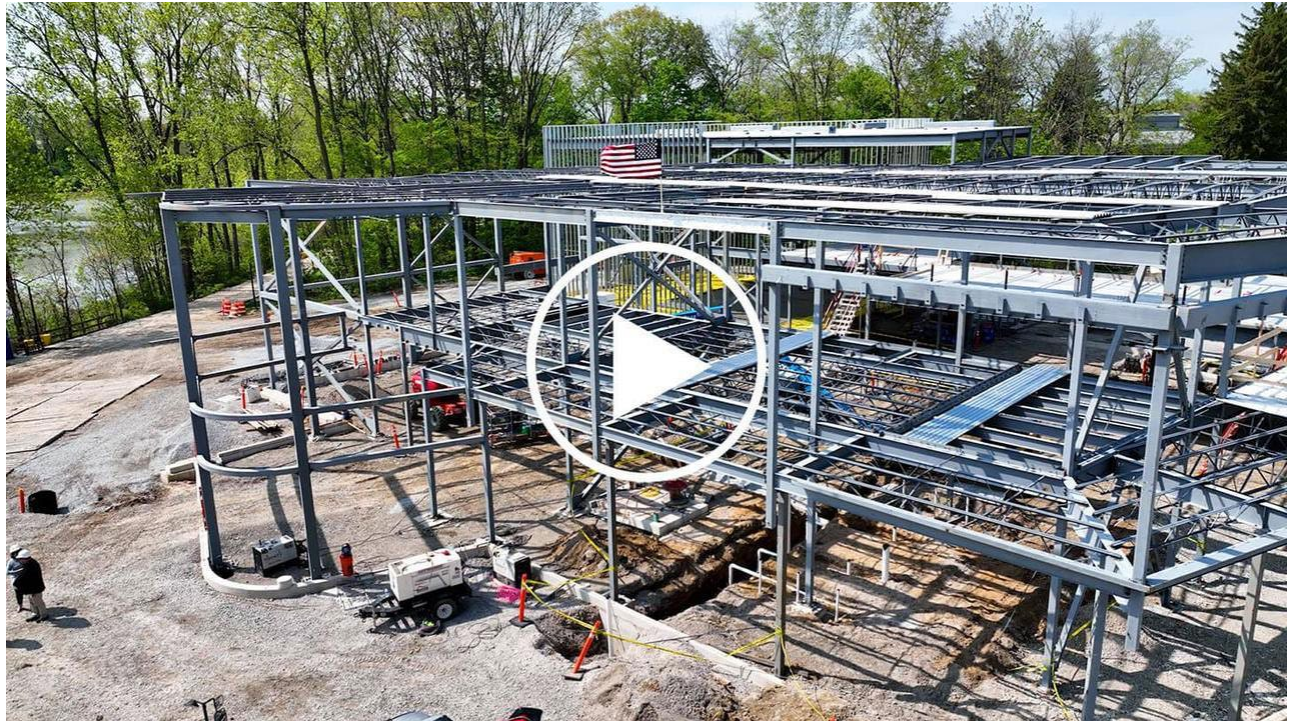
Cherry Blossom Festival Continues to Find PFW Campus a Great Place to Cultivate Growth

When Fort Wayne's Cherry Blossom Festival outgrew its downtown location three years ago, the event moved to the campus of Purdue University Fort Wayne. Even with 600 acres to play with, ensuring elbow room is still a consideration.

Last year, more than 12,000 people participated in the **six-hour event** celebrating Japanese Culture. Most of the activities radiated out from Walb Student Union to various other locations in the middle of campus. On Sunday, the 2025 event will stretch even further to accommodate more bodies, booths, and vendors, this time edging toward Gates Sports Center.

The festival runs from noon to 6 p.m., and admission is free. PFW serves as a community partner. Everything starts with Fort Wayne Taiko, a program of the Fort Wayne Dance Collective, playing its big drum to call spectators into the International Ballroom at Walb for the opening ceremony.

[READ MORE](#)



Catch a Bird's-Eye View of the Topping out of the Surack-Sweetwater Music Industry Building

The tradition of topping out a new construction with its last—and often highest—beam was observed Thursday at the site of the Surack-Sweetwater Music Industry Building on the campus of Purdue University Fort Wayne.

Leading up to this milestone, students, faculty, and staff were invited to help leave their mark on the project by signing the freshly painted piece of steel.

[WATCH VIDEO](#)

Longtime Backer of University Highlights 3 in Year-end Wrap-up

The group Friends of the University at Purdue Fort Wayne has recognized three individuals who were recipients of its annual awards.

The Friends Outstanding Teacher Award was presented to Suin Roberts, associate professor of German.

Leah Hathaway, a mechanical engineering major, and Weston Tilby, a biology major, will receive \$1,000 students scholarships from the Friends group.

The student scholarship recipients needed to be incoming freshmen at the start of the fall semester who demonstrated strong academic performance based on high school GPA and national test scores. They were also required to make a brief presentation at a Friends meeting.

Friends started in 1976 to support the university through the engagement of members in a variety of educational meetings, campus-based events, and annual giving. The membership includes current and former professional women who advocate and support the university while also continuing their own passion for learning. In 2023, Art Friedel, a professor emeritus in the Department of Chemistry and Biochemistry, was recruited to become the first male to join the group.

Working through the **Office of Development and Alumni Engagement**, Friends has raised money for campus projects, including more than \$15,000 for the **FRIENDS of the University Pantry**.

Good to Know

Summer Work Schedule and Changes to Remote Work Start Monday

On April 16, Chancellor Ron Elsenbaumer informed faculty and staff of the implementation of a modified summer work schedule, as well as a plan to transition away from standardized or guaranteed remote work days, beginning Monday (May 19). Read the full details [here](#).

Donate Professional Clothing to the Mastodon Career Closet at Tomorrow's Drive-Thru Event

The Career Development Center will host a professional clothing drive Friday from 11 a.m. to 2 p.m. For added convenience, staff members will be stationed at Kettler Hall on the back circle drive that's bordered on two sides by **parking lots PL6 and PL9** so donors won't need to get out of their vehicles.

News Spotlight

A sampling of external news coverage of Purdue University Fort Wayne.

Topping out the Surack-Sweetwater Music Industry Building

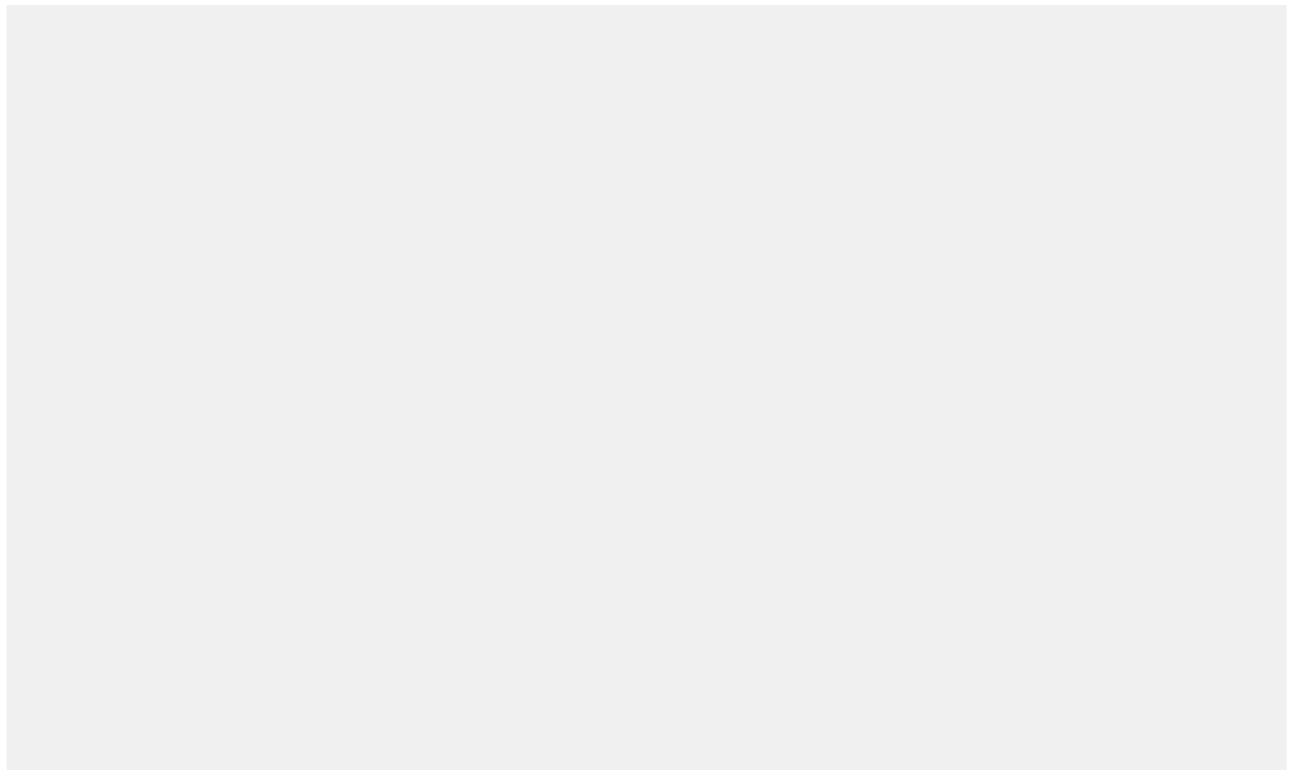
The Journal Gazette (subscription required) | May 8

The Mind Trust: Tindley Accelerated Schools achieves 100% college acceptance for all graduates

WISH (Indy) | May 6

In a Snap

Seen and noted around campus. Monitor our university social feeds for more great moments of Mastodon life.





These students added their signatures to the new Surack-Sweetwater Music Industry Building's ceremonial last beam on May 8. See what the finished product will look like by [clicking here](#).

News Center



Inside PFW Archive



Athletics



Ripples



Inside PFW is an official university communication for faculty and staff. All submissions should be sent to inside@pfw.edu no later than 2 p.m. on the day prior to the next edition to be considered for inclusion. Newsletter guidelines can be accessed in the PFW **News Center**.

Inside PFW is produced twice weekly on Tuesday and Thursday by the Office of Communications and Marketing. *Inside PFW Special Edition* is a supplement to the regularly scheduled newsletter. It covers breaking news and time-sensitive information directly related to university operations.

PURDUE UNIVERSITY
FORT WAYNE



