

# IN CASE OF FIRE

**EXIT ROOM AND FOLLOW RED ARROW**

**ALTERNATE ROUTE FOLLOW GREEN ARROW**

**DO NOT USE ELEVATORS DURING EMERGENCY SITUATION**

## ▼ FIRE ALARM

IN CASE OF FIRE OR SMOKE

- PULL FIRE ALARM FOR  
CONTINUOUS HORN SOUNDING  
AND STROBE LIGHTS

- NOTIFY POLICE AND SAFETY

1- 6911

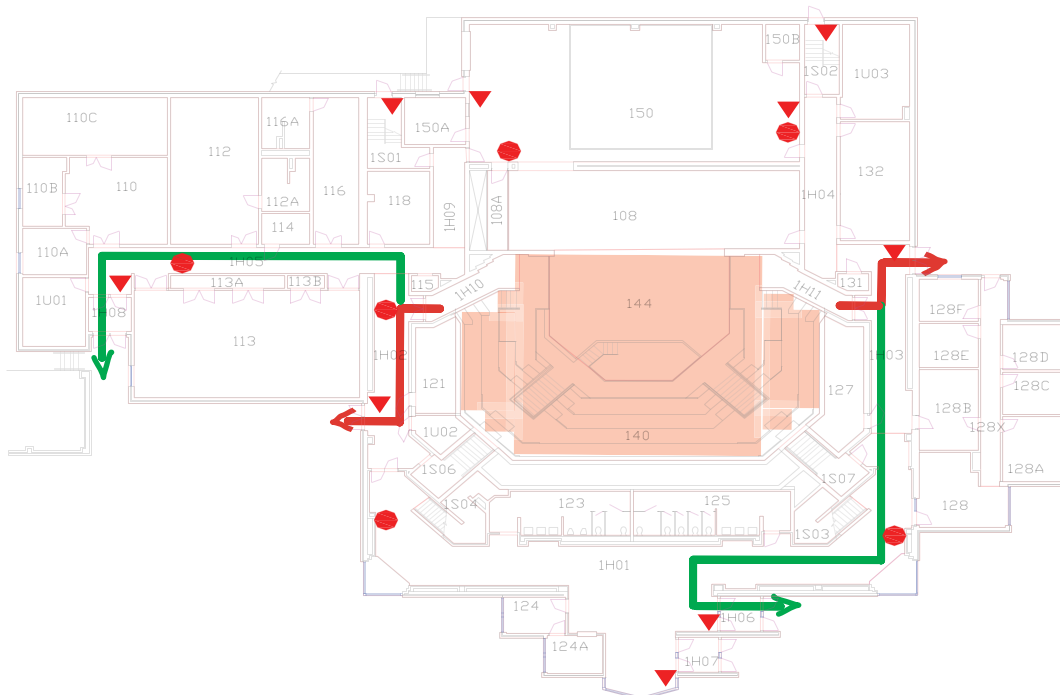
## ● FIRE EXTINGUISHER

TO OPERATE FIRE EXTINGUISHER

1. HOLD UPRIGHT
2. PULL PIN
3. AIM AT FIRE AND PULL LEVER

Rm # WT 140

Max. Occupancy 299



## IN CASE OF TORNADO

TORNADO WATCH -- chance of dangerous winds, possibly a tornado

TORNADO WARNING -- a tornado has been spotted

TORNADO SIGNAL -- series of short horn blasts

**GO QUICKLY TO THE BASEMENT OR GROUND  
FLOOR AREA OF THIS BUILDING**

## EMERGENCY TELEPHONE

AMBULANCE / EMS  
EMERGENCIES  
ESCORTS

CALL 9 - 911 THEN CALL 1- 6911  
CALL 1- 6911  
CALL 1- 6827