

IN CASE OF FIRE

EXIT ROOM AND FOLLOW RED ARROW

ALTERNATE ROUTE FOLLOW GREEN ARROW

DO NOT USE ELEVATORS DURING EMERGENCY SITUATION

▼ FIRE ALARM

IN CASE OF FIRE OR SMOKE

- PULL FIRE ALARM FOR CONTINUOUS HORN SOUNDING AND STROBE LIGHTS
- NOTIFY POLICE AND SAFETY 1- 6911

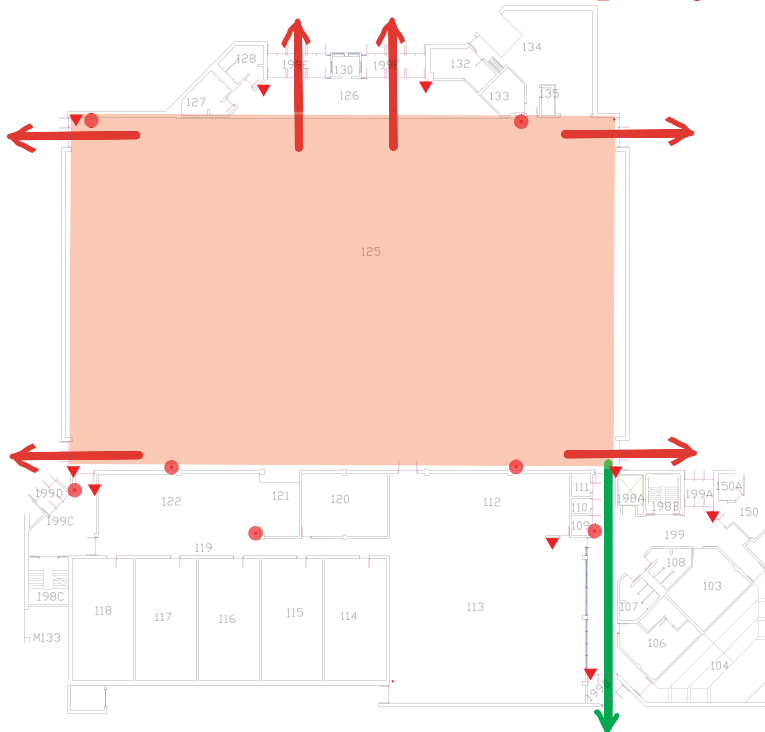
● FIRE EXTINGUISHER

TO OPERATE FIRE EXTINGUISHER

1. HOLD UPRIGHT
2. PULL PIN
3. AIM AT FIRE AND PULL LEVER

Rm # GC 125

Max. Occupancy 2500



IN CASE OF TORNADO

TORNADO WATCH -- chance of dangerous winds, possibly a tornado

TORNADO WARNING -- a tornado has been spotted

TORNADO SIGNAL -- series of short horn blasts

GO QUICKLY TO THE BASEMENT OR GROUND FLOOR AREA OF THIS BUILDING

EMERGENCY TELEPHONE

AMBULANCE / EMS
EMERGENCIES
ESCORTS

CALL 9 - 911 THEN CALL 1- 6911
CALL 1- 6911
CALL 1- 6827