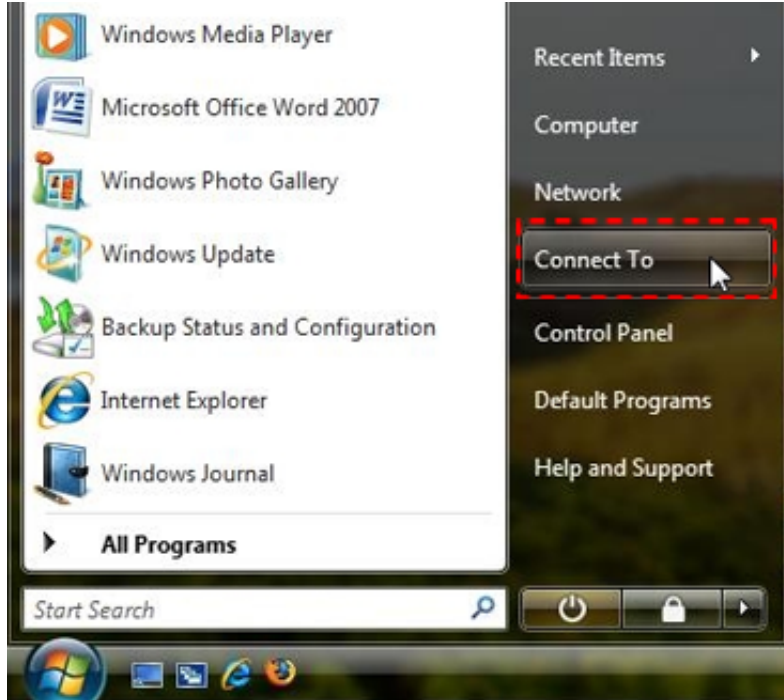
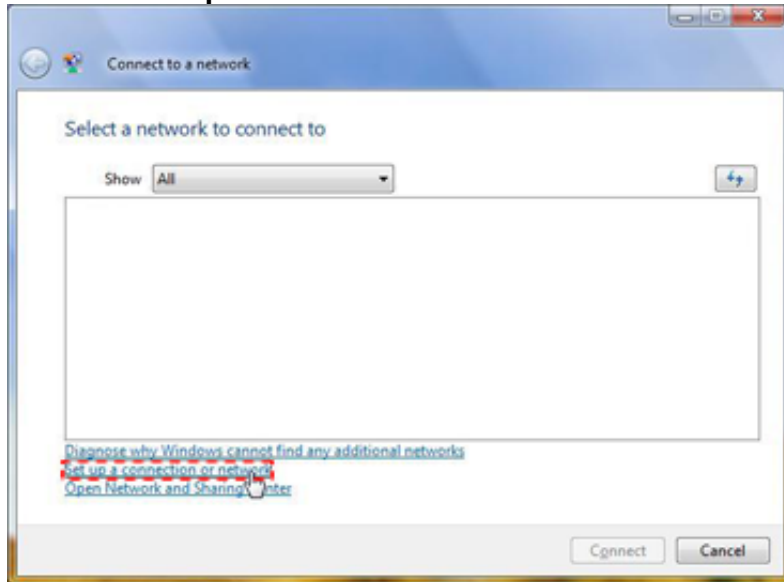


**Note:** You may be prompted during the configuration process to choose whether the new connection is to be a home, work, or public location. This setting controls the security for the wireless connection and it is recommended that you select public location for maximum security.

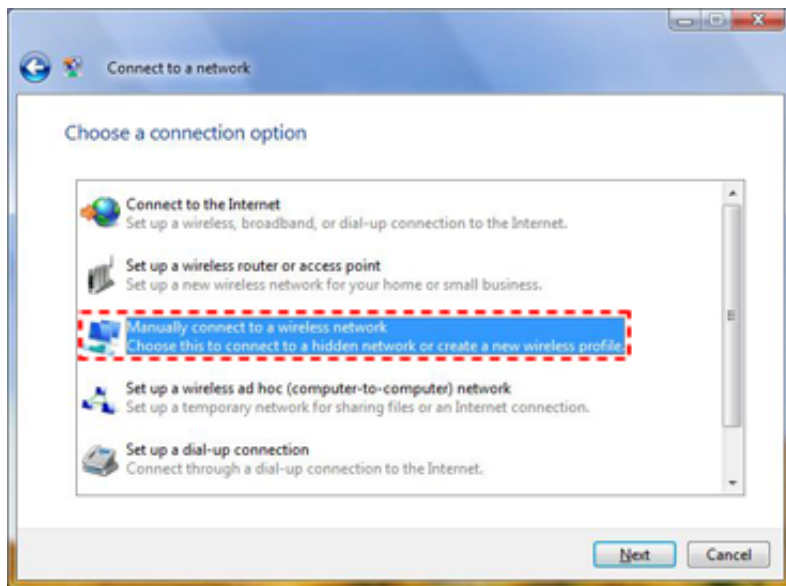
1. Click the **Start** button > **Connect To**.



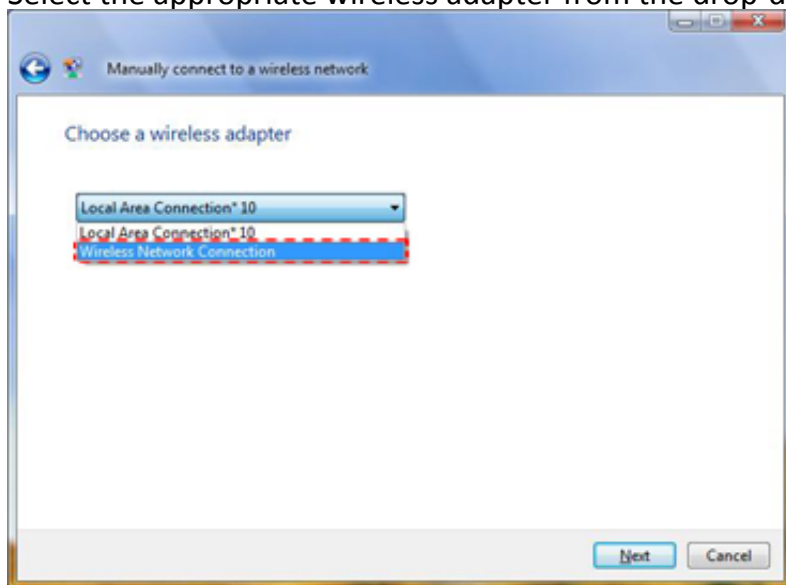
2. Click the **Set up a connection or network** link.



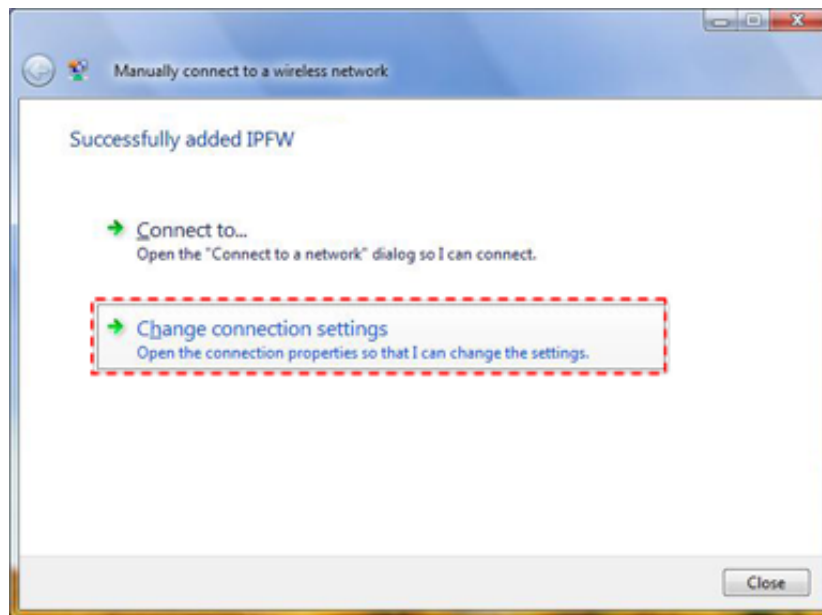
3. Choose **Manually connect to a wireless network** and click **Next**.



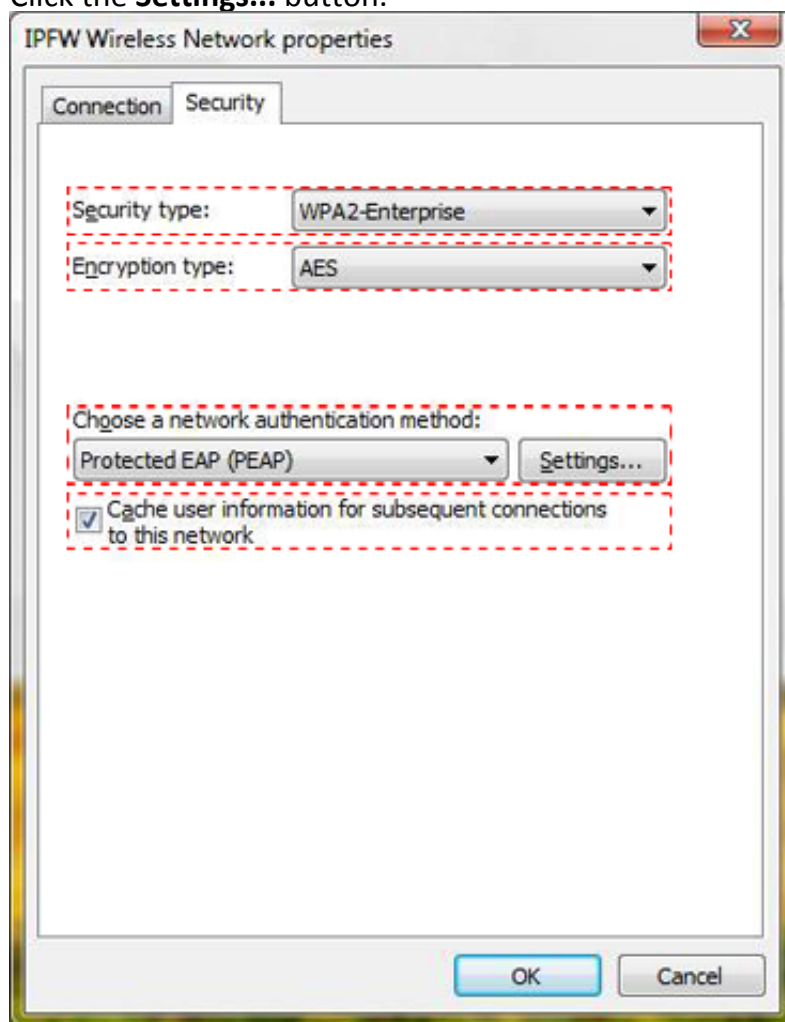
4. Select the appropriate wireless adapter from the drop-down and click **Next**.



5. Network name:
  - a. For Faculty or Staff: **IPFW Faculty Staff**
  - b. For Students: **IPFW Student**
6. **Security type:** WPA2-Enterprise
7. **Encryption type:** AES
8. Place a check next to **Start this connection automatically**.
9. Click **Next**.
  - a. **Note:** Placing a check next to **Start this connection automatically** will force Windows to automatically open a connection when the system is in range of an access point.
10. Click **Change connection settings**.

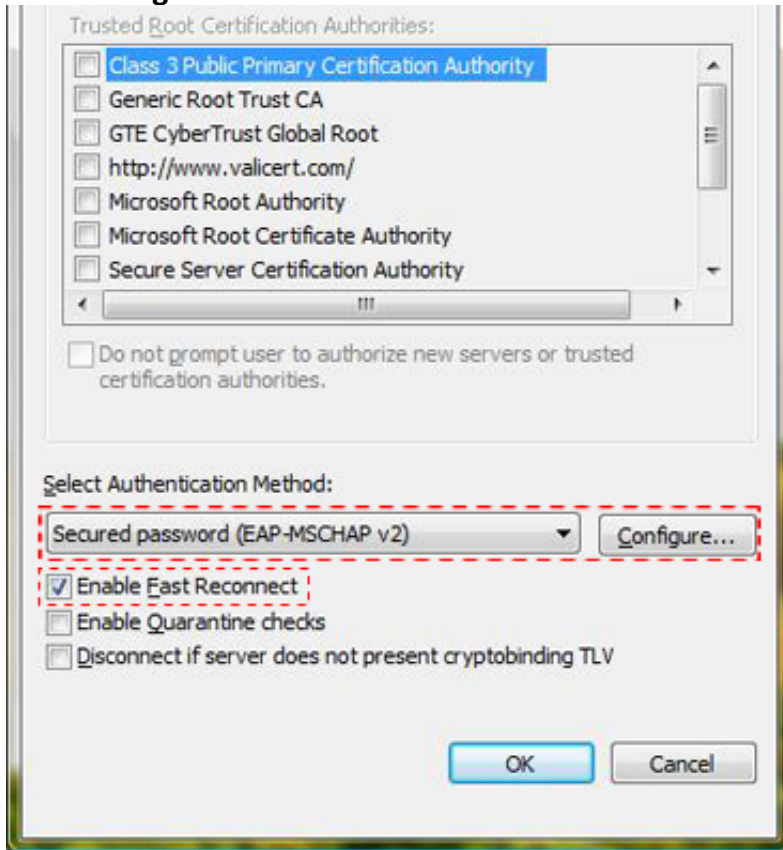


11. Click the **Security** tab.
12. Ensure **Protected EAP (PEAP)** is selected from the **Choose a network authentication method** dropdown.
  - a. **Note:** For convenience, the username and password entered may be saved for future connections to the network by placing a check next to **Cache user information for subsequent connections to this network**.
13. Click the **Settings...** button.

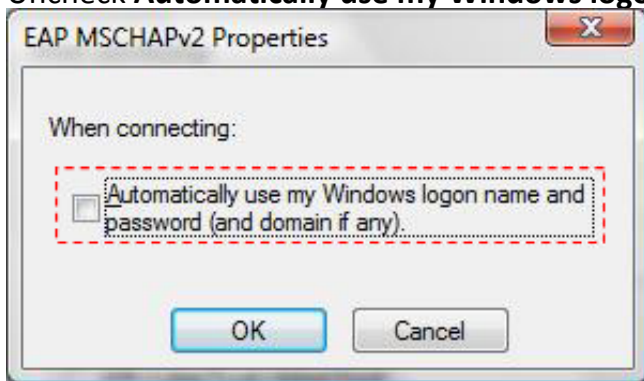


14. Under **Trusted Root Certification Authorities**, find **AddTrust External CA Root** and check mark the box next to it.

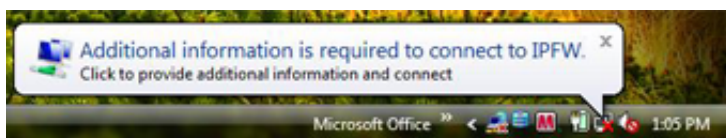
- a. If AddTrust External CA Root is unavailable, uncheck **Validate server certificate**.
- 15. Ensure **Secured password (EAP-MSCHAP v2)** is selected from the **Select Authentication Method**: drop-down.
- 16. Click **Configure...**



- 17. Uncheck **Automatically use my Windows logon name and password (and domain if any)**.



- 18. Click **OK** in the **EAP MSCHAPv2 Properties** window.
- 19. Click **OK** in the **Protected EAP Properties** window.
- 20. Click **OK** in the **Wireless Network properties** window.
- 21. Click the **Additional information is required to connect to IPFW Faculty Staff or IPFW Student** balloon.
  - a. **Note:** This balloon will only appear when the system is in range of an access point and will also appear if the password entered has expired or has been changed.



- 22. Enter your IPFW username and password.
- 23. Click **OK**.



24. Configuration of the wireless network is complete.
25. You should now be connected to the IPFW wireless network.
26. From this point forward, whenever an IPFW access point is in range, the system will automatically open a connection.
27. Once a successful connection has been completed, the connection status may be quickly viewed by hovering over the **network** icon in the system tray.