

A PUBLICATION OF THE IPFW COLLEGE OF VISUAL AND PERFORMING ARTS **SPRING 2008**

## Wherefore Art Thou, Shakespeare?



Leave it to Cole Porter to coin a lyric that would connect everyone who ever attended a high school English class: "Brush Up Your Shakespeare." Being introduced to Shakespeare in high school is one of the threads most of us have in common. And now, the IPFW Department of Theatre wants to enhance that experience for hundreds of high school students throughout northeast Indiana.

Starting in February, four IPFW theatre majors will be touring high schools, presenting a wild romp through the land of

Shakespeare titled *Brush Up Your Shakespeare*.

The 50-minute theatrical presentation is perfect for audiences of approximately 120 high school students. The troupe will perform on stages, in cafeterias, and in libraries. According to John O'Connell, chair of the Department of Theatre and the director of *Brush Up Your Shakespeare*, the department has 17 different tour dates available and there is still opportunity for schools to sign up.

Written by Tina Fitch, *Brush Up Your Shakespeare* is filled with scenes from *Romeo and Juliet*, *A Midsummer Night's Dream*, *Hamlet*, and *Macbeth* and is interspersed with historical (or hysterical) dialogue that reminds the audience that Shakespeare was a regular guy who wrote for the masses. During the 1600s, not even bear-baiting and public executions were more popular than Shakespeare. For only a penny, the average Elizabethan "Joe" could pay to stand in the Globe Theatre and enjoy all of the blood, gore, bawdiness, and history that The Bard could dish out.

"We want to fill every available tour date throughout the spring, but to do that we need to hear from the different high schools," O'Connell said. "We want principals, English teachers, and drama clubs to call us for a free booking while there's availability."

In *Brush Up Your Shakespeare*, O'Connell uses rap

Shakespeare's  
Everyday Idioms

■ See back  
cover

◀ *Brush Up Your Shakespeare* players are (back row, left to right) Josh Lee and Aaron Mann and (front row, left to right) Stephanie Vanderwall and Breona Conrad.

continued on back/Shakespeare

## Fred Fenster: Prolific and Incandescent

By Robert F. Schroeder  
Exhibition Curator

Student. Teacher. Artist. Mentor. One person can and has fulfilled these roles for others as relationships grow, change, and evolve.

IPFW Exhibition  
and Workshop  
Information

■ See page  
10

Fred Fenster *is* such a person. I first met Fenster during fall 1974 while a college sophomore at the University of Wisconsin—Madison. As an artist and teacher, Fenster was

incandescent. I think that it was his classes that made it clear to me that metalsmithing was the route I, too, would take.

Fenster was prolific and always busy, creating silver hollowware objects and many hollow form pieces in pewter that will be featured in the upcoming exhibition of Fenster's work at the IPFW Visual Arts Gallery Feb. 4–29, 2008.

Fenster's attraction to pewter began in the late 1950s when he was a graduate student at the Cranbrook Academy of Art in Bloomfield Hills, Mich. He observed other students working the metal in a way that reminded him of the ceramic process. He decided to learn all he could about this malleable metal for his thesis, which was more spontaneous and forgiving than silver, copper, or



▲ Fred Fenster | Teapot, 1998 | pewter, 10 x 10 x 4 inches

any other copper alloy. Treating pewter like clay, Fenster worked fast and hard completing 24 works of hollowware and more than 40 jewelry pieces for his thesis exhibition in only two years.

continued on back/Fenster

# Contents

**Community Arts Academy**  
enriching youth, **p2**

**New faculty** join **VPA**, **p3**

Students create **life-size sculptures**, **p5**

Our **students** and **alumni excel**, **p8**

Dozens of **exciting events** slated  
for spring, **p10**

**Interim Dean reflects** on the last  
21 years, **p11**

**VPA Visions** is a publication of the College of  
Visual and Performing Arts at Indiana  
University—Purdue University Fort Wayne.

As northeast Indiana's premier center for arts  
education, the college offers programs in fine arts,  
music, theatre and dance, and visual communication  
and design. More than 600 arts majors and minors  
study at IPFW, and numerous outreach activities are  
available to the community. VPA features more than  
100 annual performances and exhibitions that are  
open to the public. Visit our Web site at  
[www.ipfw.edu/vpa](http://www.ipfw.edu/vpa).

## Revelations Through the Lens

Elizabeth Opalenik is a photographic artist who believes that all good photographs are self-portraits that lie somewhere between imagination and dreams.

Opalenik uses photography to facilitate the healing process for women with cancer and artists dealing with life issues. She uses the creative process as a tool for revealing inner thoughts, discovering new direction, and finding the beauty and strength within each participant.

When a woman is battling cancer, struggling with chemotherapy and radiation, one of the first things to take a huge blow is her self-image. If only women could take a picture of the people they are inside as they're working through their struggles: a picture of themselves as the fighter, the spiritualist, the survivor.

As a coach and leader with the F. Holland Day Foundation for Creativity and Healing, Opalenik is a photographer who helps women do just that. And as a photographic educator in her popular class titled *Imaginations and Dreams*, she helps artists to move ahead creatively.

The F. Holland Day Foundation holds regular retreats for people dealing with cancer at its beautiful lodge on the coast of Maine. The



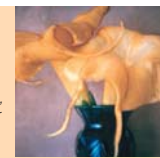
▲ Elizabeth Opalenik | Three Pears, 2002  
Polaroid sx 70 manipulation, archival pigment print

### Elizabeth Opalenik: Poetic Grace

*Fine Art Photographer,  
Educator and Lecturer*

**April 14–16:** Opalenik will visit IPFW on April 14–16, prior to her upcoming gallery opening at David Weinberg Gallery in Chicago which opens on April 18. She will be conducting a photography workshop with IPFW photography majors and will present a public lecture on her work on April 15. Copies of her recently self-published monograph of images entitled *Poetic Grace, Elizabeth Opalenik Photographs 1979–2007* will be available for purchase.

*Elizabeth Opalenik Lecture, April 15, 6 p.m.  
Science Building, Room 168*



▲ Elizabeth Opalenik's  
"Angel's Trumpet," 1998  
Polaroid sx 70  
manipulation, archival  
pigment print

foundation's healing program is two-fold, composed of spirituality and creativity. Artistic activities provide participants with an understanding of their capacity to invent and to manifest possibilities for change and acceptance on paper, in verse, in song, through a lens, or by other means.

From her earliest days doing advertising and editorial assignments, Opalenik was known for the sense of poetic grace and movement that she brought to her images. Today, her voice is primarily that of a fine art photographer, educator, and lecturer.

A denizen of the darkroom, she creates many one-of-a-kind images in the Mordancage process—hand painting, toning, and working with Polaroid and other transfer processes. Today, she also uses technology, working digitally when appropriate, and using Photoshop for its creative possibilities. Opalenik recently had the thrilling, somewhat daunting, and quite rewarding experience of self-publishing a collection of images in a monograph titled *Poetic Grace, Elizabeth Opalenik Photographs 1979–2007*. The 12-inch by 13-inch book is filled with 90, four-color images that span her 28-year career as a photographer.

## Community Arts Academy Continues Its Almost 20 Years of Youth Enrichment

The Community Arts Academy (CAA) is an outreach program of the College of Visual and Performing Arts, offering classes in art, music, theatre, and dance for children Pre-K through 12th grade since 1989. In the beginning, the classes focused on music and private music instruction, but over time, parents began to request more of the classes that their children were not being offered in school.

"Our classes are filled with enthusiastic young artists who want to learn about art, music, and theatre, and they keep coming back for more," said Maggie Hunter, director of CAA. "We try to offer a large variety of artistic experiences—everything from weaving, to ceramics, to theatre, to Irish step dance."

Registration for spring semester started on January 7 and will continue until classes are filled. For a complete listing of our affordable spring classes, visit our Web site at [www.ipfw.edu/vpa/caa](http://www.ipfw.edu/vpa/caa). To register for classes, receive regular mailings regarding classes offered each semester, and to

learn about our exciting summer camps, call Hunter at 260-481-6059.

### CAA Student Successes in 2007

**Michael Hesse**, a seventh grader at Holy Cross Lutheran School and a piano student of Dorothy Hendricksen, received a "1" rating at the Lutheran Arts audition for Concordia High School and received gold at last spring's Indiana State School Music Association auditions.

**Leechen Zhu**, student of piano instructor Christine Freeman, won the district competition in the Early Elementary division of the Hoosier Auditions (Indiana Music Teachers Association) in spring 2007.

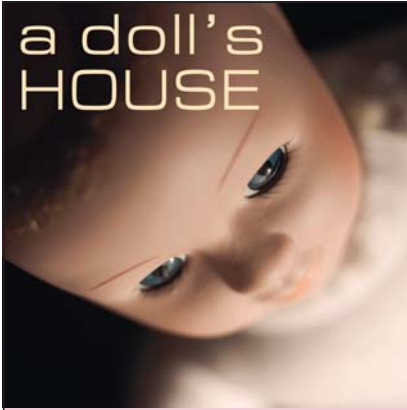
**Natalie Farison**, a piano student of Joyanne Outland, received early acceptance as a piano performance major at The Cincinnati Conservatory of Music. Another of her students, **Evan Keenan**, won the district competition in Senior Level division of the Hoosier Auditions.



▲ Breona Conrad teaches Irish step dance to Community Arts Academy students on Saturdays.

The IPFW CAA Community Flute Choir, directed by Ann Donner, gave holiday concerts in 2006 at Village Oaks Nursing Home and at Forest Park United Methodist Church.

# a doll's HOUSE



As it turns out, Nora Helmer, the tragic heroine of Henrik Ibsen's *A Doll's House*, becomes an "individualist" in the third act of the play. In the eyes of director Jeff Casazza, there are so many more levels to Nora than just labeling her a feminist. "Social mores of the time would not allow women to be individuals, and Ibsen held a mirror up to this society," Casazza said.

When *A Doll's House* opened in Copenhagen in 1879, the play provoked strong reactions, including producers who demanded that Ibsen change the ending. Audiences either really loved it or really hated it. They came expecting the traditional well-made play of the time with villains, foils, and romantic leads; where an

exposition is offered, followed by a situation, and finally a resolution of that situation in the third act.

When Ibsen turned the tables on the audience with a more contemporary play structure, many were left completely rattled. Ibsen was christened "The Father of Realism" when he became notable for exchanging the last act's unraveling for a discussion. And often, it is a discussion with no firm conclusion or solid understanding of what happens to those characters after the play.

In *A Doll's House*, Nora, a trophy wife, appears to live a happy, almost child-like existence with her husband, Torvald, and their three children, until an ill-conceived business deal returns to haunt her. It involves a complex plot with forged signatures, illegal financial matters, and blackmail, with all three of those calling into question the role of women in society and their place outside of the home.

When the IPFW Department of Theatre presents *A Doll's House* in February, Casazza, who is making his IPFW directorial debut, is looking forward to finding out what it is to be an "individualist." He anticipates the journey and character development waiting to be discovered for all of the characters in the play. Having read the script dozens of times, he equates the character of Nora to other tragic figures like Oedipus.

"When Oedipus discovers that his idea of self is absolutely wrong, he banishes himself, and in many ways, Nora makes the same tragic decision when her idea of self is similarly challenged," Casazza explains. "Both Nora and her husband, Torvald, are living in a fantasy world of what they believe marriage should be like. At the start of the play, with the New Year approaching, Nora and Torvald are on the precipice of having the best year of their married life by society's standards."

"Each of the five main characters in the play makes an incredible journey from beginning to end," Casazza said. "With Torvald's inability to support Nora at the most critical moment in their marriage, her world changes forever. And, so does his. By the end of the play, the new start that the New Year represents for them has changed dramatically."

Is it any wonder, with contemporary themes that still ring true after 128 years, Ibsen is the most frequently performed dramatist in the world after Shakespeare.

## Williams Theatre

February 22, 23, 28, 29 and March 1 at 8 p.m.  
March 2 at 2 p.m.

American Sign Language-interpreted performance: March 2

Admission for IPFW students with university ID is free and all other tickets are \$14 and under. The Theatre Box Office opens on February 18. Make reservations by calling 260-481-6555 or our TTD at 260-481-4105. For more information, visit our Web site at [www.ipfw.edu/vpa/theatre](http://www.ipfw.edu/vpa/theatre).

## New Faculty and Staff



The Department of Theatre is pleased to welcome Assistant Professor **Jeff Casazza** to its faculty. Casazza is a director, actor, and playwright who studied with Jose Quintero while completing his graduate work at Florida State University. Prior to attending Florida State, he worked and directed at the Steppenwolf Theatre in Chicago.

His graduate internship took him to London where he worked with Jonathan Miller on his West End production and European tour of the *A Midsummer Night's Dream*. Upon earning an M.F.A. in directing, he worked for two summers directing *The Tempest* and *Macbeth* at The Waterside Theatre in North Carolina while working as an assistant stage manager for *The Lost Colony*.

Casazza has worked at the Indiana Repertory Theatre in Indianapolis and has directed for the Phoenix Theatre, Bridgework Theatre, The Edyvean Repertory Theatre, Indianapolis Civic, and at numerous universities. In 2003, the Arts Council of Indianapolis awarded him a Creative Renewal Arts Fellowship, which allowed him to spend two summers training with Anne Bogart and the SITi Company. More recently, he was a visiting member of the performance faculty at Purdue University, where he received certificates of merit in directing for his productions of *As Bees in Honey Drown* and *Metamorphoses*.

The Department of Music welcomes Visiting Assistant Professor and Director of Instrumental Studies **James Colonna**. Colonna received a Doctorate of Musical Arts from Michigan State University in 2007. Prior to serving as the director of bands at Laramie County Community College, he was a conducting graduate assistant at the University of North Texas where he earned a Master of Music in wind conducting.

During the last 10 years, Colonna has been a frequent guest conductor throughout the United States where he has premiered many of his own compositions. In 1996, he began his career as a composer and has composed more than 16 original

compositions, of which 12 have been published by Larry Daehn Music and C-Alan Publications.

As a trumpet performer, he performed with the 113th Army Band, the Edgewood Symphony Orchestra, the Cheyenne Symphony, the Night Flight, and Jim Colonna Big Band, as well as at numerous community events.



The Department of Theatre welcomes Professor **John O'Connell** to the helm as chair of the department. He received an M.F.A. in directing from the University of Alabama in

1998 after 12 years of directing, producing, and production stage-managing in New York City. Most recently, O'Connell served as associate professor of theatre at Arkansas State University where he supervised the B.F.A. emphasis in directing. He pursues an active professional directing career while maintaining a busy academic schedule.

His areas of interest in teaching include directing, acting Shakespeare, stage management, and theatre management. Recent professional directing credits include *Dial 'M' for Murder* at the American Stage in Florida, *The King and I* at Theatre Memphis, and *The Mousetrap* for Playhouse on the Square in Memphis. O'Connell has spent several summers at the Oklahoma Shakespearean Festival where he directed *Sweeney Todd*, *King Lear*, and *Always Patsy Cline*, among many others.

While living and teaching in Arkansas, O'Connell was active in Memphis, Tenn., where his production of *Over the River and Through the Woods* garnered six Ostrander Award nominations, winning two. His production of *You Can't Take It With You* also garnered several nominations, again winning two. Some recent productions directed at ASU include *Twelfth Night*, *The Elephant Man*, *Waiting for Godot*, and *The Laramie Project*.

The Department of Visual Communication and Design is pleased to welcome Visiting Professor **Jauneth Skinner** to her duties as interim department chair. She earned an M.F.A. from Bowling Green State



University, and a B.F.A. and an A.S. in Commercial Art Technology from IPFW.

Most recently, Skinner served as professor in the Department of Visual Arts at Bemidji State University in Bemidji, Minn., where she taught graphic design, typography, and illustration classes, as well as printmaking and life drawing.

Skinner is an award-winning graphic artist who creates mixed-media, limited-edition prints and illustrations. Her works have been included in more than 125 exhibitions and in six different countries. Her work has been exhibited in The National Museum of Women in the Arts in Washington, D.C.; United Nations' Fourth World Conference on Women in Beijing, China; Studio la Città in Verona, Italy; Artemisia Gallery, Chicago Printmakers Collaborative, and Anchor Graphics in Chicago; and the Minnesota State Arts Board, Center for Book Arts, and the Minneapolis Art Institute. Skinner is a member of American Print Alliance, Southern Graphics Print Council, Northern Printmakers Alliance, and the Mid America Print Council. She is a former associate editor/designer of the *MAPC Journal*.



Brazilian pianist and Assistant Professor **Hamilton Tescarollo** is a welcome addition to the Department of Music as director of keyboard studies. He made his orchestral debut with the

São Paulo State Symphony Orchestra as a winner of this prestigious ensemble's Young Soloists National Competition. Since then, he has performed both as a soloist and as a chamber musician in the United States, Canada, Europe, and South America.

Tescarollo, who previously taught at Arizona State University, is also an active lecturer and adjudicator, and has been a member of the Arizona Young Artist Committee and coordinator for the Bösendorfer & Schimmel USASU International Piano Competitions.

Tescarollo received an undergraduate piano performance degree from Santa Marcelina College in Brazil, a master's and D.M.A. from Arizona State University, and a performance diploma from Escola Municipal de Música de São Paulo. His teachers include pianists Gilberto Tinetti, Caio Pagano, Roberto Hamilton, Sandra Abrão, and Paulo Bergamo.

## The Art of Ireland and England

The IPFW Department of Fine Arts will host its seventh Fine Arts Trip Abroad from June 10–23, 2008. The Art of Ireland and England will include stays in Shannon, Dublin, Bath, and London. Stops along the way will include the Cliffs of Moher, the Iveragh Peninsula, Blarney Castle, the medieval village of Kilkenny, St. Patrick's Cathedral, and Trinity College in Dublin.

Included in the trip are visits to Snowdonia National Park in Wales, Stonehenge, and Salisbury Cathedral in England, and four nights in London with a subway pass. Visits to Windsor Castle, the British Museum, and Buckingham Palace will also be planned. Add to this the exciting music, scenery, and charm of two great island cultures, and this is

sure be one of our most memorable IPFW Department of Fine Arts study abroad trips.

The trip will be organized and conducted by EF Tours based in Lucerne, Switzerland, with a U.S. headquarters in Cambridge, Mass. EF Tours is a long-standing leader in the field of education-based study abroad trips. The cost of the trip, which includes round-trip airfare from Chicago, hotel accommodations, land and sea transportation, two meals a day, entry tickets to 10 events, and a tour director, starts at \$3,200.

IPFW students can add an advanced art history class to the trip for credit. All payments are due on March 1. For full details, contact Dana Goodman at 260-481-6706 or e-mail [goodmand@ipfw.edu](mailto:goodmand@ipfw.edu).



▲ Stonehenge, on Salisbury Plain west of Amesbury, Wiltshire, in Southern England

## Faculty Successes

### Fine Arts

Assistant Professor **Christopher Ganz** displayed his large-scale charcoal drawings shown at The Carnegie Visual and Performing Arts Center in Covington, Ky., in March 2007. These drawings were part of The Carnegie's *March Mixed-Media* exhibition.



▲ Chris Ganz (seated center) works with area teachers during a printmaking workshop.

Assistant Professor **Christopher Ganz** introduced color woodcut printmaking to area art teachers and a student during an art teacher workshop on June 13, 2007, at IPFW. During morning and afternoon sessions, they created a color woodcut that involved multiple layers of colors on the same print.

Associate Professor **Nancy McCroskey** has been awarded an Indiana Arts Commission Individual Artist Program grant for creative work in the large-tile format. Her work titled "Botanica," was selected for inclusion in *500 Tiles* by Lark Books.



Professor **John Hrehov** represented IPFW's art department with the inclusion of his painting, "Friend," at the Indiana University Museum of Art in October 2007.

The exhibition was part of Celebrate IU Week and featured the arts within the entire Indiana University system.

Chair and Associate Professor **Dana Goodman's** sculpture, "The Rambouillet That Discovered Tomatoes," was featured in the Midwest Museum of American Art's *29th Regional Art Exhibition* in Elkhart, Ind., in October 2007, receiving the William Batten Award of Merit. The same work was presented at the Sculpture Center's *On A Pedestal and Off The Wall* exhibition in Cleveland, Ohio, in March 2007. His work, "Isn't That Crazy?," was part of the National Council on Education for the Ceramic Arts' (NCECA) conference exhibition, *Ohio University Ceramics: 1990 Until Now*, at the Riverbend Winery in Louisville, Ky., in March 2007.

Professor **Audrey Ushenko** captured history on canvas at the Indiana State Museum in late March and early April 2007. The painting is a narrative that included historical figures, building features, and visitors to the museum during the time she was painting the mural. Ushenko is currently working on a mural of IPFW Wednesday afternoons in Kettler Hall in front of the administrative offices. Students and the campus community are invited to stop by to observe and participate her work.

Professor Emeriti **Norman Bradley, George McCullough, Russell L. Oettel, and Donald Kruse** joined Rick Cartwright and Maurice Papier of the University of Saint Francis for an exhibition at the Fort Wayne Museum of Art titled "Fort Wayne Six." The exhibition focused on how these six impacted the Fort Wayne community during a 45-year period, with a combined 206 years of teaching.



▲ Department of Music continuing lecturers and faculty perform at the Eckhart Public Library in DeKalb County.

### Music

The Department of Music participated in the DeKalb County Public Library's Summer Reading Club program. Continuing lecturers **David Cooke, Alan**

**Severs, and Jennifer Robinson**, along with limited-term lecturer **Steve Walley**, presented an introduction to orchestral instruments, classical music, and composers for 150 children at the Eckhart Public Library in June 2007.

Associate Professor **Barbara Resch** presented a paper, "Songs from Childhood: What Makes Them Memorable?," at the International Kodály Symposium at Capitol University in August 2007.

Associate Professor and Indiana Music Educators Association (IMEA) president-elect **Barbara Resch** and IMEA president Lissa May met with the staffs of U.S. Senators Richard Lugar and Evan Bayh and U.S. Representatives Mark Souder and Baron Hill at their Washington, D.C., offices in February 2007. Among the topics presented was the National Association for Music Education's National Anthem Project. As a result of this visit, Bayh introduced Senate Resolution No. 236 to support the National Anthem and the work of music teachers.

Assistant Professor **Nancy Jackson** taught Continuing Music Therapy Education (CMTE) sessions at the annual conference of the Great Lakes Region of the American Music Therapy Association (AMTA) in Cleveland, at the Ohio Association for Music Therapy annual conference in Cincinnati, and at the AMTA annual conference in Louisville, Ky. She was also chosen to present clinical sessions at all three conferences.

Continuing lecturer **Melissa Reinhardt** presented the benefits of music therapy to a class of nursing students at Indiana University-Kokomo. She also conducted a presentation titled "Sing, Sing a Song: Incorporating the Use of Music in the Home for Children with Special Needs" to the Center for Neurobehavioral Services (CNS) family support group in Fort Wayne.

Assistant Professor **Robert Saunders** performed with the Viola da Gamba Dojo of New York in November 2007. The ensemble is led by John Mark Rozendaal. Saunders sang arias by Bach and the bass solos in a cantata by Thomas Tomkins. Saunders also presented a paper at the Hawaii International Conference on Arts and Humanities titled "A Rhetorical Approach to the Performance of Handel's Bass Arias" in January.

Assistant Professor and new Director of Keyboard Studies **Hamilton Tescarollo** presented at the World Piano Pedagogy Conference in Las Vegas in November 2007. He also gave a lecture on piano technique for the Phoenix Music Teachers Association. In addition, he performed a program of Brazilian music with commentary for the Northeast Indiana Music Teachers Association (NIMTA).



Limited-term lecturer **Todd Earney**, in conjunction with Quebecor World Midland, received a gold award at the International Association of Printing House Craftsmen (IAPHC) International Gallery 2007 competition in September. His entry was the publication *Warbird Digest*, Issue 15, July/August 2007.

Associate faculty **Marcy Trentacosti** is pursuing a master's degree in violin performance at Bowling Green State University during the 2007–08 academic year.

Associate faculty **Allen Etter** spent the summer with director Ted Tiefel producing the film *Darkness Aftermath*. *Aftermath* is an independent film based on a script by Etter and is a joint student film between IPFW and ITT Technical Institute. A trailer of the film is currently running on College Access Television.

**Theatre**

Associate Professor **Craig A. Humphrey** was awarded a certificate of merit for costume design for *The Comedy of Errors* from the Kennedy Center/American College Theatre Festival in April 2007. Assistant Professor **Thomas John Bernard** was awarded a certificate of merit for costume technology/costume shop supervisor in the production of *The Comedy of Errors*.

Continuing lecturer **James Gabbard** had three pieces of work shown in The Wassenberg Center's *30th Annual Photography Exhibit*. Gabbard received best of show in the black and white category for "Those Eyes" and also won first place in special effects for "Elegant." The exhibition was in spring 2007 in Van Wert, Ohio. He also had his piece "Angles" accepted for the Honeywell Center's annual photography exhibit in Wabash, Ind.

Assistant Professor **Thomas John Bernard** was the first hand for *Candida* at the Tony Award-winning Utah Shakespearean Festival. Bernard was also first hand for the national tour of *Gypsy*.

Assistant Professor **Rob Lopez** completed an artist-in-residency program as part of the Honeywell Center's educational outreach program. He gave interactive demonstrations and presentations about design and computer art for Manchester Junior High School, Wabash High School, Oak Hill Junior High School, the Heartland Career Center, and Northfield High School.

Assistant Professor **Jeff Casazza** performed the role of Mike in *The Love Poetry of Karl Marx* by William Gebby at the Indiana Theatre Association's 2007 Indiana Theatre Works Conference in September. During the weekend, scripts selected by professional readers were rehearsed in a workshop setting, giving the playwrights and other theater artists an opportunity to develop new works and share in the creative process. The plays were performed for the public at the end of the conference.

Interim Chair and Visiting Professor **Jauneth Skinner** was selected to *Who's Who in America 2008*. She had three heliogravure prints on exhibition in the *Lessedra Fifth International Print Exhibition* in Sofia, Bulgaria. Her digital heliogravure titled "In the Poet's Garden" was published in the color exhibition catalogue accompanying the exhibition.



World-renowned stage voice instructor Kristin Linklater was at Butler University, October 5 and 6 as part of the Jordan College of Fine Arts Leadership through the Arts Forum. Assistant Professor **Jeff Casazza** attended her lecture and was an invited participant in her master class.

Limited-term lecturer **Jim Williams** had his mixed-media drawing "My Favorite Sock" on display in the *Self-Portrait Exhibition* at Artlink in Fort Wayne.

Assistant Professor of Scenic and Lighting Design **Mark Ridgeway** designed scenery for Tibbits Opera House during summer 2007. The productions included *Can-Can*, *Picnic*, *Sweet Charity*, and *Little Shop of Horrors*. Ridgeway served as scenic artist on each production and during fall 2007, Ridgeway also served as guest scenic designer for Huntington University's production of *Little Women*.

**VPA**

Assistant Professor **Shari Troy** was awarded a research grant from the Purdue Research Foundation for summer 2007. She is currently contributing to a book project.

The Entrepreneurship in the Arts program offered through the IPFW Division of Continuing Studies was awarded "Course of the Year for 2006" by the Indiana Council on Continuing Education. Individuals instrumental in creating this unique course, which helps artists turn their passion into profit, include (l-r) **Mike Kelly, Benjamin C. Christy, Deb Conklin, Karen Van Gorder, and Ken McCrory**.



**Visual Communication and Design**

Assistant Professor **Benita Brewer** received a research grant from the Purdue Research Foundation for summer 2007. Assistant Professors **Robert Lopez** and **Richard Nelipovich** were IPFW Summer Grant recipients in 2007. Assistant Professor **Benita Brewer** had a solo exhibition titled *Time: Body, Soul, and Spirit* in the Visual Arts Gallery from Sept. 24–Oct. 19, 2007.



▲ Students in Auburn, Ind., survey their classroom project, which was a reflection of the city's *Sculpture on the Square* exhibition.

**Arts Scholars Make Connection in the Classroom**

IPFW Arts Connection Scholars have one mission and that is helping K–12 teachers in the classroom. Thanks to a special grant to the College of Visual and Performing Arts, teachers from the 11-county IPFW service area can submit an application requesting that an arts scholar be chosen to help them with any number of art-related projects. Class projects can either be discipline-specific or interdisciplinary, linking social studies, math, literature, foreign language, language arts, science, technology, and the arts.

Almost any type of project a teacher can imagine involving the arts is a good candidate for the program. Possible class projects can include set, costume, and make-up design for theatrical productions; vocal coaching for the school musical; history taught through period music, art, or dance; and art creations such as murals or sculptures, to name only a few. Arts Scholars have helped with numerous Future City projects and most recently with the Auburn Arts Council's exhibition *Sculpture on the Square*.

*Sculpture on the Square*, which was on display in Auburn during summer 2007, celebrated the works of American sculptor J. Seward Johnson. The exhibition featured more than 20 bronze, life-size sculptures that were placed throughout the city, making Auburn an outdoor sculpture museum. The Auburn Arts Council, which organized the event, wanted to include educational programs with the exhibition.

One of the educational programs was prepared by IPFW Arts Connection Scholars and art education majors Abby Murray and Jennifer Clements. These two students developed a series of lesson plans called "Sculpting a Celebration of Everyday Life" and presented it to fourth grade students at several schools in Auburn. Murray and Clements' lesson plans introduced students to J. Seward Johnson's works and encouraged them to brainstorm and decide on a pose for their classroom sculpture project.

As the classes progressed, the children's bodies were evaluated for average measurements. Parts of the sculpture such as arms, legs, torso, and head were assigned to individual groups, and framing the sculpture with wire began. By the last class, the children had a finished sculpture and details such as hairpins, watches, and drawing eyes were added. The finished sculptures were placed throughout schools in Auburn in connection with the *Sculpture on the Square* exhibition.

*If you or a teacher you know would like to submit an application to have an IPFW Arts Connection Scholar assigned to their classroom, visit our Web site at [www.ipfw.edu/vpa/opportunities/cooperative.shtml](http://www.ipfw.edu/vpa/opportunities/cooperative.shtml) or call Maggie Hunter, assistant to the dean, at 260-481-6059.*

# Premiere Season. Premiere Experience.

The acoustically superb John and Ruth Rhinehart Music Center, designed by Fort Wayne-based



is visually exciting with glass-primed piano studios and congregation rooms that create exquisite spaces for learning and interaction. With its panoramic views of the IPFW arts plaza and the heart of campus, the music center completes the arts courtyard along with the Ernest E. Williams Theatre and the Visual Arts Building.

The Rhinehart Music Center is an acoustic envelope. Each building element was designed in

concert between architect and acoustician to enhance sound. Each space has been fine-tuned.

Teaching studios, rehearsal spaces, and practice rooms are acoustically isolated. Floating floors and ceilings, massive walls 16- to 18-inches thick, and door seals ensure there will be no vibration, no bounced sound, and no echoes. Wood and canvas

reflector panels in the performance halls balance sound to accommodate unamplified singing and instrumentation, as well as amplified, spoken word. An architectural score made of brick staffs—with windows representing notes and glass prisms adding musical accents—surrounds the exterior of the building. Inside and out, the Rhinehart Music Center sings. ■

Music and community arts partners. Designed to serve the university and the community, the building



Courtesy  
Schenke/Shultz

sponsored by Development to thank generous donors campus-wide. Anne Reardon also sponsored a special reception for music alumni in the Rudy and Rhonda Reardon Student Center. The evening featured a musical performance with the University Singers that evening.

The evening was charged with excitement as Ruth Rhinehart and John Schenke, the donors of the center, joined the 1,600-seat performance hall, but also a special dedication of the 250-seat Rhinehart Recital Hall. After refreshments and conversation, APFAUSE guests were ushered into the performance hall for a special performance by the University Singers, led by Robert Bean, chair of the Department of Music, also gave a piano performance.

While guests were enjoying the dedication, the general public arrived and everyone took their seats in the Auer Performance Hall in anticipation of the opening concert, featuring the Fort Wayne Philharmonic conducted by Edward Czerniecki, guest conductor. The concert featured performances by vocalists, singers, and soloists Amy Prockel, soprano, The Auer Performance Hall was made possible by love B. Auer, who passed away last year and was not able to enjoy the awestruck applause she made possible with her gift to the university.

"It was a fabulous evening as we celebrated such hard work and dedication from so many individuals," Bean said. "I hope you have been in attendance at the opening of our Department of Music Center and that you have been inspired by the generous donation of this exquisite building is only enhanced by seeing her regularly in the performance spaces she so loves. She is delightful in her support."

Please take an opportunity during spring semester to attend a Department of Music concert and enjoy this fantastic performance center. For a complete listing of upcoming performances, visit the Department of Music website at [www.ipfw.edu/departmentofmusic](http://www.ipfw.edu/departmentofmusic). page 10 or visit our Web site at [www.ipfw.edu/departmentofmusic](http://www.ipfw.edu/departmentofmusic).



## Luxuries Built Right In

What makes The John and Ruth Rhinehart Music Center so special? It's the state-of-the-art recording studios and other facilities.

- Twenty-four separate practice rooms for student musicians to rehearse. Six rooms are available for private lessons. Each room has a private door and four of the rooms are equipped with state-of-the-art recording capabilities.
- Spacious piano studios large enough to accommodate matching grand pianos.
- A large, sound-isolated percussion studio.
- Computer labs and classrooms that feature the latest technology, including iPads, but are designed to handle future advancements.



parlor of the Fort Wayne Women's Club. The Fort Wayne Women's Club occupied the third floor of the Chamber of Commerce Building in 1910. The building was purchased by the Women's Club and made a gift of the chandelier to Ruth Rhinehart, for her newly named recital hall, when they knew they would be moving from their grand home.

They wanted one of their treasured possessions to follow in the tradition of the year-old Auer as its new home in the Rhinehart Recital Hall.

When students returned to campus, they discovered that the IPFW Department of Music was the proud recipient of eight new Yamaha P22 pianos. Upon their arrival, the pianos were moved into a variety of studios and practice rooms in The John and Ruth Rhinehart Music Center.

"The donation by Mary Michalak is yet another example of the overwhelming generosity and support by our patrons and alumni," said Robert Bean, chair of the Department of Music. "The donation of the chandelier is a beautiful reminder of the continued love of music throughout our artistic career. We are very lucky that she continues to have a great interest in music and that she supports our students' efforts."

Michalak, owner and CEO of CATS Inc., has a commercial art degree from Indiana University and a B.F.A. from the Fort Wayne School of Art. She is the daughter of the late Dr. P.W. DeGroot of The CATS, CATS Inc. Michalak owns with high quality, user-friendly, and cost-effective of topical, ready-to-use templates.

"The reason I wanted to provide these instruments to the practice rooms was because of the challenges I faced as a student," Michalak said. "It was always a contest to find an affordable piano with piano to adequately prepare for a performance."

Michalak, a coloratura soprano, studied voice with professor Robert Bean, who was her vocal coach while she was studying under their direction. She participated in the Opera Ensemble Workshop and had the lead roles in Giuseppe Verdi's three-act opera *Alfano* and Donizetti's comic opera *The Elixir of Love*.

The eight pianos are dedicated to Joseph and Voletta Meyers and associate professor emerita of music Masson Robertson.



▲ (Seated) Mary Michalak, (back row, l-r) Hannah Escarola, Masson Robertson, and Robert Bean

## A Caravan of Pianos Arrives at Rhinehart

When students returned to campus, they discovered that the IPFW Department of Music was the proud recipient of eight new Yamaha P22 pianos. Upon their arrival, the pianos were moved into a variety of studios and practice rooms in The John and Ruth Rhinehart Music Center.

"The donation by Mary Michalak is yet another example of the overwhelming generosity and support by our patrons and alumni," said Robert Bean, chair of the Department of Music. "The donation of the chandelier is a beautiful reminder of the continued love of music throughout our artistic career. We are very lucky that she continues to have a great interest in music and that she supports our students' efforts."

## History. Nostalgia. Elegance. Grand Pianos

Robert Parish is not only a generous man, but also a champion of the arts. In 1910, he donated a grand piano to the IPFW memory alive. As a tribute to Robert Parish, he has donated her beloved seven-foot Shureway grand piano to the IPFW Department of Music. The piano will be housed in the Rhinehart Recital Hall as its permanent home.

## Crystal Chandeliers

The beautiful, crystal chandelier so admired in the auditorium of the Rhinehart Recital Hall previously hung in the main



▲ Cutting The John and Ruth Rhinehart Music Center ribbon are (l-r) Vice President Franco A. Colonna, Dale Schenke, Philip Rhinehart, and IPFW Chancellor Michael A. Warrick.

## Opening Night Spectacular

With 1,600 guests in attendance, the Auer Performance Hall in the John and Ruth Rhinehart Music Center was inaugurated on October 4. Following a ribbon-cutting with Chancellor Michael Warrick, local and state dignitaries, the campus community, and numerous donors, the festivities began. More than 100 friends of the university started the evening by attending APFAUSE, the annual appreciation reception

## Student Successes

### Fine Arts

Seniors **Andrew Lemmon**, **Patrick Linker**, **Hatidza Mulic**, and **Johanna Rooijakkers** shared the Department of Fine Arts' Winger Award for graduating seniors. The award, generously funded by Jim and Linda Winger, is designed to give high-achieving seniors an opportunity to set up a studio, travel, or apply for graduate school.

Seniors **Patrick Linker** and **Hatidza Mulic** shared the 2006–07 Department of Fine Arts Outstanding Student Service Award that honors students who have dedicated themselves to the success of the department.



▲ Rebecca Bailey | "Another Day in Paradise"  
24" x 20" | color woodcut

**Rebecca Bailey**, **Josh Hoering**, **Chase Wire**, and **Julie Wall** had their work displayed at Artlink's 27th Annual Print Exhibition, May 25–July 5, 2007.

### Art Education

Alumnae **Jennifer Clements** and **Abby Murray** were hired this spring following their respective student teaching positions last fall. Clements will be teaching at Jefferson Middle School in Fort Wayne, and Murray will be teaching at the St. Joseph–St. Elizabeth Catholic School in Fort Wayne.



▲ Students (l–r) Chase Wire, Jennifer Clements, and Leah Fleetwood

Assistant Professor and Director of Art Education **Hai Kyung Kim** attended the National Art Education Association conference in New York City in March 2007 with art education majors **Jennifer Clements**, **Leah Fleetwood**, and **Chase Wire**.

**Jennifer Clements**, **Abby Murray**, **Angela Grogg**, **Karen Montoya**, and **Chase Wire** attended the Art Education Association of Indiana conference in Indianapolis in November 2007. Clements and Murray presented an adjudicated

lecture, "Sculpting Life-Like Figures" with Hai Kyung Kim. The lecture was based on a curriculum sculpture project, "Sculpting a Celebration of Everyday Life," which Clements and Murray wrote and taught to fourth graders last spring in Auburn, Ind. See related story on page 5.

### Music Therapy

Continuing lecturer **Melissa Reinhardt** and Assistant Professor **Nancy Jackson**, along with 13 music therapy students, participated in the semi-annual Indiana Music Therapists conference in Indianapolis in September 2007.

**Lindsey Oldham** was accepted into the clinical internship program at University Good Samaritan Center, a hospital in Minneapolis.

**Chad Reichert** began a university-based clinical internship at Turnstone Center for Children and Adults with Disabilities in Fort Wayne, a position in conjunction with Meaningful Day Services Inc. Reichert also accepted a position as case manager at Turnstone.

**Lauren Stoner** was accepted into the clinical internship program at River Oaks Psychiatric Hospital in New Orleans.

**Rhoda Long** completed a clinical internship with Bethany Lutheran Village in Dayton, Ohio.

### Theatre

**Derek Bever**, **Aaron Mann**, and **Emily Todd** worked at the Huron Playhouse in Ohio during summer 2007. Bever was an electrician and rigger; Mann acted in productions and was a member of the crew; and Todd worked on costume construction.

Senior **Jessica Butler** played the role of Audrey in the recent Fort Wayne Civic Theatre production of *Little Shop of Horrors* and was a player in the Fort Wayne Philharmonic Pops Concert in December.

**Brent Bruin** was awarded a certificate of merit for his work as stage manager for the play *Story Theatre* by the Kennedy Center/American College Theatre Festival in April 2007.

### Senior Theatre Major is Miss IPFW 2008

Senior **Jessica Butler** (center) was crowned Miss IPFW in October 2007 in The John and Ruth Rhinehart Music Center. Along with gifts and scholarships, she also won the People's Choice Award. In June, Butler will represent IPFW in the Miss Indiana Pageant. Senior **Margaret Lothamer** (far right), a music performance major, was fourth runner-up. The Miss IPFW Scholarship Program is part of the Miss America system. Contestants range from freshman to seniors with a variety of interests, with each contestant having a platform in which she is interested. Contestants raised money for the Children's Miracle Network.



**Jessica Butler**, **Breona Conrad**, **Adam Hamilton**, **Blane Pressler**, **Tamara Ricketts**, **Jessica Sisson**, **Brett Tubbs**, and **Stephanie Vanderwall** were



among the Irene Ryan Award nominees and their acting partners who competed in the Region III Kennedy Center American College Theatre Festival (KC/ACTF) in Milwaukee in January. Nominees included Pressler, nominated for *The Crucible*, with partner Butler; Ricketts, nominated for *More Fun Than Bowling*, with partner Tubbs; Sisson, nominated for *More Fun Than Bowling*, with partner Hamilton; and Vanderwall, nominated for *The Lark*, with partner Conrad.

### Visual Communication and Design



▲ Andrew McMillen with his senior project at the Kachmann Gallery in April 2007

Seniors **Amanda McConnell**, **Andrew McMillen**, and **Ryan Pape** received top honors in the fall 2007 *B.F.A. Visual Communication and Design Senior Exhibition*. The Outstanding Senior Award went to McMillen. The Best Senior Exhibition Award was shared equally between McConnell and Pape.

**Erica Coffing** has been involved with the Northeast Indiana Innovation Center (NIIC) to help clients such as Expo East attain its graphic and industrial design goals. She worked with LacPro International on the launch of its new product, pro.bio.MAX. She also worked with Schwartz Biomedical to produce surgical illustrations of the company's Meniscal Fixation Device.

**Dawn Turner** received an internship at Sweetwater Sound in Fort Wayne.

**Richard Wanjema** won a logo design competition for the IPFW Black Collegian Caucus.

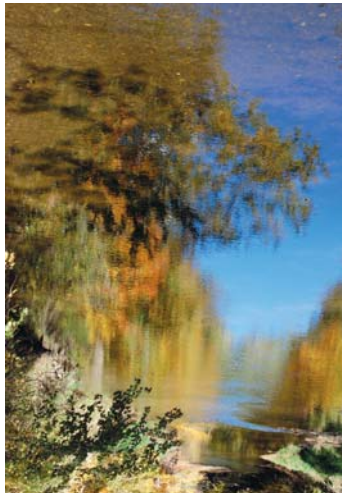
Senior **Amanda McConnell** completed work on the Mike Downs Center for Indiana Politics' Indiana courthouses calendar as part of an internship. The photographs in the calendar were chosen from submissions of historic courthouses from photographers statewide. McConnell was responsible for all design work, photo retouching, and layout.

### Photography

**William Baulkley** has two of his recent fashion show photographs on the Jefferson Pointe Mall Web site, [www.jeffersonshopping.com](http://www.jeffersonshopping.com). Baulkley also presented an exhibition of the *Seven Deadly Sins* at

Henry's Restaurant in Fort Wayne during April 2007. Greed, pride, lust, wrath, sloth, envy, and gluttony were represented, each with its own portrait-based photograph. In addition, his photograph "Submission Silenced," a black and white self-portrait, was included in the *Self-Portrait Exhibition* at Artlink in Fort Wayne in December 2007.

**Dan Dienelt** and continuing lecturer **Jim Gabbard** both had photographs accepted in the Artlink's *Fort Wayne Photographers* in the 2007 exhibition.



▲ Photograph courtesy of Libby Huffer, visual communication and design major

**Libby Huffer** was hired by the Allen County Education Partnership to produce photographs for marketing its literacy programs.

**Rebecca Koverman's** digital photograph titled "Blue and Red" was used on the recent cover of the IPFW Spring 2008 *Schedule of Classes*.

**Nic Pyle** and **Chad Ryan** had their photos published in *The News-Sentinel* in spring 2007. Pyle is an intern there, and Ryan, who also covered the Super Bowl, is an employee of the paper.

**Lisa Schwaberow** had two digital photographs exhibited in *Stacked: Art Work Influenced by Reading Material* in the new Jeffrey R. Krull Gallery in the Allen County Public Library in October 2007.

**William Baulkey, Debra Crouch, Libby Huffer, Anita Kramer, Barbara Mendez, Angela Roberts, Malina Sanfilippo, Daniel Scheerer, and Megan Strouse** had work accepted in the fall 2007 Helmke Library Student Art Exhibition. First place went to Baulkey for "Surrealist City Pt II," Scheerer won second place for "Simplicity," and Strouse won third place for "Untitled Still Life #3."

## Alumni Successes

### Fine Arts

**Gwen Gutwein's** ('82) "Barns of Indiana" 2008 calendar is now available. The calendar contains 13 barn paintings and their histories from 13 different counties throughout Indiana. Barn paintings and information on ordering a calendar can be found on her Web site at [www.ipfw.gwengutwein.com](http://www.ipfw.gwengutwein.com).

**Elizabeth Bradford** ('06) is teaching art to 5–12 grade students with Argos Community Schools in Argos, Ind.

**Jenifer Brown** ('06) was accepted into the Ph.D. program in art history at the University of Iowa.

**Jonathon Burns** ('07), who now lives and works in Bend, Ore., took Best of Show at the Wildfire Pottery Showcase.

**Derek Decker** ('06) was accepted into the 2007 summer residency of the Watershed Center for the Ceramic Arts.

**Leah Fleetwood** ('07) is an art teacher at Heritage Junior/Senior High School in Monroeville, Ind.

**Brandon Furniss** ('06) was accepted into the M.F.A. ceramics program at Kent State University.



▲ Andrew Lemmon with one of his senior project sculptures in the IPFW Visual Arts Gallery

**Andrew Lemmon** ('07) was accepted into six M.F.A. sculpture programs including Pratt Institute, Montana State University, New Mexico State University, University of Notre Dame, Bowling Green State University, and Kent State University. He is currently attending Kent State University.

**Deborah Robinson Miller** ('06) was the featured artist this fall at La Salle Gallery in Fort Wayne.

**Kim Rorick** ('02) has her work featured in the 2007 book *500 Cups* published by Lark Books.

**Matt Shaffer** ('03) exhibited his ceramic work in September in a show titled *Muse of Fire* in Fort Wayne; in October 2007 at the Thornbrook Art Festival in Gainesville, Fla.; and in November at the exhibition *Tell Me a Story* in Santa Fe, N.M. Shaffer also taught a hand-building workshop in October in Gatlinburg, Texas. A ceramics and sculpture professor at Santa Fe Community College in Gainesville, Fla., Shaffer received an M.F.A. from the University of Florida in 2005.

**Jason Stopa** ('07) has been hired as education coordinator by the Fort Wayne Museum of Art.

### Music Education

**Heather (Atkinson) Ramser** ('07) is teaching K–6 music at Monroeville and Hoagland elementary schools in Allen County.

**Mitch Freeman** ('06) is teaching instrumental music at Portage Middle School in Fort Wayne.

**Matthew Johnston** ('07) is teaching K–6 music at Imagine Master Academy in Fort Wayne.

**Aimee (Marschand) Slone** ('05) is now teaching K–6 music at Oak View Elementary School for Northwest Allen County Schools.

**Alissa Schoon** ('06) is the choral teacher at Prairie Heights Middle and High School in Lagrange, Ind.

## Music Alumni Sing at Opening

It was a grand night for singing as 12 vocal performance alumni sang during the opening night dedication concert on October 4 for The John and Ruth Rhinehart Music Center. Vocal alumni sang with the IPFW Department of Music's University Singers during excerpts from "The Tender Land" by Aaron Copeland. Alumni from music therapy and music education, along with the vocal performance alumni, attended a reception in their honor in the Rudy and Rhonda Kachmann Student Commons on the second floor of the music center.

▼ Front row (l–r): Sara Davis, Phyllis Boester, Barbara Resch, Janet Piercy, Rochelle Starnes, Sue Lough, Curtis Shaw, and Andrew Harper. Back row (l–r): Jim Davis, April Parvisis, Sondra Franks, LeAnn Boedeker, Betty McKee, Chris Rasor, Shelley Sanders Bass, and Jan Conser Gidley.



### Music Performance

**Ben Wedler** ('04) received an Anthony Award for 2006–07 Outstanding Leading Male Performance in a Musical from the Fort Wayne Civic Theatre for his role as Horton the Elephant in *Seussical*.

### Music Therapy

**Heather Palmer** ('06) accepted a clinical music therapy position with Meaningful Day Services Inc., serving clients in the Allen County area.

**Diane Parker** ('00) was recently accepted into the master's degree program for vocational rehabilitation counseling at Ball State University.

**Sarah Scott** ('06) completed a clinical internship with Helping Hands Center for Special Needs in Worthington, Ohio, and accepted a clinical music therapy position with Meaningful Days Services Inc., serving clients in the Indianapolis area.

**Jennifer (Sons) Ferrara** ('00) was approved by the American Music Therapy Association to begin a music therapy internship program at Behavior Specialists of Indiana in Valparaiso, Ind.

### Theatre

**Melissa Dowty** ('04) starred in *Found a Peanut*, a play about a group of children in which the discovery of money leads to squabbles and bitterness and makes them aware of greed, betrayal, and violence. The play was performed at the 78th Street Theatre Lab in New York City in May 2007.

**Jane Frazier** ('00) was on the dean's list after her first year in the M.F.A. Theatre Teaching Program at Virginia Commonwealth University. She has performed at VCU and was the assistant director for VCU's production of *Dracula* in November 2007.

**Jonathan Gilbert** ('02) and John Tarbet wrote a musical that was hosted by St. Peter's Church in New York City. The play is described as a musical/operatic/lyric-theatre-epic and is named after Edith Stein, one of the most controversial figures in the modern Catholic and Jewish faiths.

**Gloria Minnich** ('05) was singled out for an Anthony Award for 2006–07 Outstanding Supporting Female Performance in a Drama from the Fort Wayne Civic Theatre for her role as Claire in *Proof*.



## Fred Fenster: Working With Pewter

February 22, 23,  
24, and 25

9 a.m.–4:30 p.m. each day



The Department of Fine Arts is pleased to offer a unique opportunity for artists to participate in a four-day workshop with metalsmith Fred Fenster. During this four-day workshop, participants will work under the direct supervision of Fenster to gain hands-on experience in the exploration and creation of an object, with the possibility of completing up to three finished pewter artworks. Fenster will be demonstrating and using the following processes and techniques: fabricating, raising and forming, and flatware. The workshop will be in the IPFW Department of Fine Arts Metalsmithing Studio, Visual Arts Building, Rooms 119 and 121.

This unique opportunity is open to the general public for \$250 and all non-credit fees include materials. IPFW students with a valid university ID pay just \$146 for this noncredit course and must register in person in Kettler Hall, Room 139. This course is also available for credit to IPFW students (FINA P490-01 CRN 23928). To register for credit, students should follow standard registration procedures. Credit students will pay an additional \$40 fee for materials.

For more information, visit [www.ipfw.edu/vpa](http://www.ipfw.edu/vpa) and click on the pewter tea pot or contact:

### IPFW Division of Continuing Studies

2101 E. Coliseum Blvd.  
Fort Wayne, IN 46805-1499  
260-481-6619

## Visual Arts

**Fred Fenster: Metalsmith Created and Collected**  
Pewter works created and collected by Fred Fenster, professor emeritus of the University of Wisconsin-Madison.  
**February 4–29**  
Visual Arts Gallery



**Fred Fenster Artist's Reception**  
Join metalsmith Fred Fenster for an artist's reception of his exhibition.  
**February 24** 4–7 p.m.  
Visual Arts Gallery

**Fred Fenster: Working With Pewter**  
A unique opportunity for artists to participate in a four-day workshop with metalsmith Fred Fenster.  
**February 22, 23, 24, and 25**  
9 a.m.–4:30 p.m. each day  
To register, call 260-481-6619.

**Spring Senior B.F.A. Exhibition—Fine Arts**  
Seniors graduating from the Department of Fine Arts share their work.  
**March 17–April 11**  
Opening Reception:  
**March 20** 6–8 p.m.  
Visual Arts Gallery

For additional information on the aforementioned exhibitions, call the Department of Fine Arts at 260-481-6705.

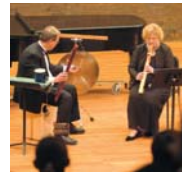
IPFW on April 14–16. She will talk about her work with the public and campus community on April 15 at 6 p.m. during a free lecture in the Science Building, Room 168. Copies of her recently self-published monograph of images titled *Poetic Grace, Elizabeth Opalenik Photographs 1979–2007* will be available for purchase. For additional information, call VCD at 260-481-6709.

## Music

All concerts are in The John and Ruth Rhinehart Music Center and the following ticket prices apply unless otherwise noted: Admission for IPFW students with university ID is free, \$5 adults, \$4 seniors, and \$3 for all other students. For the most up-to-date information, call the Department of Music at 260-481-6714 or visit our Web site at [www.ipfw.edu/vpa/music](http://www.ipfw.edu/vpa/music). The concert schedule is subject to change.



**Jazz Ensemble**  
Kathy Kosins, with her critically acclaimed voice and eclectic musical palette, will join the IPFW Jazz Ensemble for an evening of expressive and soulful jazz. According to the *Chicago Tribune*, Kosins has "one of the most alluring voices in jazz."  
**February 8** 7:30 p.m.  
Auer Performance Hall



**Music Therapy Student Recital**  
IPFW music therapy majors will perform a varied repertoire, including selections in their individual areas of music expertise and selections

**Spring 2008 Senior B.F.A. Exhibition—VCD**  
**April 11–28**  
Opening reception:  
**April 11** 7–9 p.m.  
**The Jeffrey R. Krull Gallery**  
Allen County Public Library  
The exhibition can be viewed Monday–Thursday from 9 a.m.–9 p.m.; Friday and Saturday from 9 a.m.–6 p.m.; and Sundays from Noon–5 p.m.  
For additional information, call the Department of Visual Communication and Design (VCD) at 260-481-6709.

**Elizabeth Opalenik—Poetic Grace**  
Fine Art Photographer, Educator, and Lecturer  
**April 14–16**  
The Department of Visual Communication and Design welcomes Elizabeth Opalenik to

## Gallery Space at a Premium

Each year the Department of Visual Communication and Design graduates so many seniors, it becomes a challenge to find a gallery space large enough to accommodate their work.

This year, nearly 20 seniors, showing their work in Web design, illustrations, graphic design, photography, 3-D modeling, and animation will require dozens of display stations, computer kiosks, and hundreds of square feet of wall space to show admirers what they have learned. Luckily, the Jeffrey R. Krull Gallery in the downtown Allen County Public Library has come to the rescue for the spring exhibition.

"We are excited to be one of the community members with whom the library has chosen to share its space," said Jauneth Skinner, interim chair of visual communication and design. "We have more than 280 majors, and students coming up the ranks are thrilled to know that this space will be available to them each spring."

The Krull Gallery has invited other community members to exhibit work there including Artlink, the University of St. Francis, and the annual *Motherlode* exhibition. The gallery exhibition is open during regular library hours. For additional information, call the Department of Visual Communication and Design at 260-481-6709.

## Introducing Hamilton Tescarollo



As soon as the Department of Music announced it was searching for a new director of keyboard studies in light of Masson Robertson's retirement, applications began pouring in from around the world. With almost a year to fill the position, the department was confident it would find not only a dynamic teacher for its students but an artist who was sheer magic behind the keyboard.

"After carefully considering a very large pool of exceptional candidates, Hamilton Tescarollo, a pianist with an exciting international reputation, rose to the top as our first choice," said Robert Bean, chair of the Department of Music. "We were so pleased that he accepted our offer to join us in Fort Wayne."

Brazilian pianist Hamilton Tescarollo had his orchestral debut with the São Paulo State Symphony Orchestra (OSESP), as a winner of this prestigious ensemble's Young Soloists National Competition. Since then, he has performed both as a soloist and as a chamber musician in the United States, Canada, Europe, and South America.

Tescarollo taught previously at Arizona State University, Faculdade Santa Marcelina, and Escola Municipal de Música de São Paulo. His students have been prizewinners of numerous local and state competitions, and he was named Teacher of the Year at the 2001 Schimmel/Arizona Piano Young Artist Piano Competition.

appropriate for the clinical music therapy setting.  
**February 15** 7:30 p.m.  
**Rhinehart Recital Hall**  
Admission is free.

**Faculty Recital featuring Hamilton Tescarollo, piano**  
A classical recital featuring Haydn's *Sonata No. 60 in C Major*, Schumann's *Vienna Carnival, Op. 26*; Prokofiev's *Sonata No. 2 in d minor, Op. 14*; and works by Brazilian composers Camargo Guarnieri and Villa-Lobos.  
**February 17** 2:30 p.m.  
**Rhinehart Recital Hall**

**Symphonic Wind Ensemble**  
A concert titled *Intimate Designs* will feature the IPFW Chamber Winds performing Charles Gounod's "Petite Symphony"; Karel Husa's "Divertimento"; Philip Glass's "Concerto for Saxophone Quartet"; and Pavel Tschesnokoff's "Salvation is Created."  
**February 22** 7:30 p.m.  
**Rhinehart Recital Hall**

**Faculty/Student Showcase Recital**  
Department of Music faculty and their students will showcase some of their latest efforts from the studio.  
**February 23** 7:30 p.m.  
**Rhinehart Recital Hall**

**Community Orchestra**  
A concert featuring the IPFW Student Concerto and Aria Competition winners.  
**February 25** 7:30 p.m.  
Auer Performance Hall

**Faculty Recital featuring Farrell Vernon, saxophone**  
A classical recital featuring James Farrell Vernon.  
**April 8** 7:30 p.m.  
**Rhinehart Recital Hall**



**Faculty Recital featuring Amy Prickett, soprano**  
A classical recital featuring Amy Prickett, soprano, with guests Todd Prickett, tenor; Robert Bean, piano; Hamilton Tescarollo, piano; and James Colonna, trumpet.  
**March 2** 2:30 p.m.  
**Rhinehart Recital Hall**

**Faculty Recital featuring David Cook, trombone, and Alan Severs, trumpet**  
**March 19** 2:30 p.m.  
**Rhinehart Recital Hall**

**Farrell Vernon Faculty Jazz Combo**  
Don't miss the combined talents of exciting IPFW jazz musicians assembled by Farrell Vernon for a Monday night jazz treat each semester.  
**March 24** 7:30 p.m.  
**Rhinehart Recital Hall**

**Piano Studio Showcase**  
Assistant Professor and Director of Keyboard Studies Hamilton Tescarollo presents student performances from his piano studio.  
**March 26** 7:30 p.m.  
**Rhinehart Recital Hall**

**Jazz Combo Showcase**  
A variety of jazz combos will perform.  
**March 29** 7:30 p.m.  
**Rhinehart Recital Hall**

**Flute and Clarinet Studio Showcase**  
Continuing lecturer Cynthia Greider presents performances featuring students from her woodwind studio.  
**April 7** 7:30 p.m.  
**Rhinehart Recital Hall**



**Guitar Ensemble**  
Guitar Ensemble students perform from a vast classical guitar repertoire including works by J. S. Bach, Villa-Lobos, and Gaspar Sanz.  
**April 9** 7:30 p.m.  
**Rhinehart Recital Hall**

**Jazz Ensemble**  
The concert will feature famous theme songs from popular television sitcoms and movies.  
**April 11** 7:30 p.m.  
**Auer Performance Hall**



**Symphonic Wind Ensemble**  
*Dreams and Fantasies* will feature guest composers Ken Johnson and Steven Bryant and student soloist Ben Dykeman. The ensemble will perform Bryant's "Radiant Joy" and Johnson's "Quintoinion," among others.  
**April 20** 2:30 p.m.  
**Auer Performance Hall**

**Percussion Ensemble**  
Percussionists perform selections using a mixture of traditional and unique rhythm instruments.  
**April 21** 7:30 p.m.  
**Auer Performance Hall**

## calendar



**Trombone Studio Showcase**  
Continuing lecturer David B. Cooke presents performances featuring students from his trombone studio.  
**April 22 7:30 p.m.**  
Rhinehart Recital Hall

**Saxophone Quartet and Choir**  
The Sax Quartet is composed of soprano, alto, tenor, and baritone saxophone. The saxophone choir is open to musicians throughout the community.  
**April 23 7:30 p.m.**  
Rhinehart Recital Hall



**Choral Ensembles Concert**  
Enjoy this opportunity to hear all three IPFW choral ensembles share the stage: the University Singers, the Chamber Ensemble, and the Choral Union. Repertoire

will include "Petite messe solennelle" by Rossini and "Zigeunerlieder" by Brahms.  
**April 25 7:30 p.m.**  
Auer Performance Hall



**Community Orchestra**  
The orchestra performs Beethoven's *Symphony No. 5* and welcomes guest Alan Severs performing Hummel's *Trumpet Concerto*.  
**April 28 7:30 p.m.**  
Auer Performance Hall

## Theatre

Box Office: 260-481-6555  
TTD: 260-481-4105  
[www.ipfw.edu/vpa/theatre](http://www.ipfw.edu/vpa/theatre)

**A Doll's House**  
By Henrik Ibsen  
Directed by Jeff Casazza  
Williams Theatre  
**February 22, 23, 28, 29 and March 1 8 p.m.**  
**March 2 2 p.m.**  
American Sign Language-Interpreted  
Performance: March 2

From the father of Realism, *A Doll's House* is the first modern feminist play about a young woman's desire for self-discovery and self-sufficiency. The play's tragic heroine, Nora,

and her ultimate actions, rocked the audiences of the 1890s. The play continues to move audiences today.  
Admission for IPFW students with university ID is free. All other tickets are \$14 and under. Theatre Box Office will open February 18.

**Wonderful Town**  
Music by Leonard Bernstein  
Book by Joseph Fields and Jerome Chodorov  
Lyrics by Betty Comden and Adolph Green

"It's a great way to conclude the year, where students and faculty alike, are working together on one piece," O'Connell said. "We will have a much clearer picture of where the department is headed in the future after this exciting musical. We will all know so much more of what each of us is able to bring to the process."

Choreographer Brittney Coughlin is working on dance numbers for the ensemble, and costume designs by Craig Humphrey will be a delightful reflection of the summer of 1935.

Ruth Sherwood, played by Breona Conrad in her senior project, and Eileen Sherwood, played by Jessica Butler, are two sisters fresh off the bus from Ohio, having arrived amid the bustling streets of New York City in 1935. Eager to take this *Wonderful Town* by storm, the two set out to make it big, fall in love, and live happily ever after in the Big Apple.

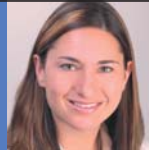
An expertly crafted musical comedy with music by Leonard Bernstein and lyrics by Comden and Green, *Wonderful Town*, with its zippy and harmonious score, celebrates New York as the magnet for young people to fulfill their greatest ambitions and lifelong dreams.



## Area Art Partners

**Fort Wayne Area Community Band**  
All Fort Wayne Area Community Band concerts are in the Auer Performance Hall in The John and Ruth Rhinehart Music Center. Tickets are \$5 adult, \$4 senior, and \$2 student. Children 5 and under are admitted for free.  
**Winter Concert February 26 7:30 p.m.**  
**Spring Concert May 6 7:30 p.m.**

## Meet Your IPFW Alumni Association Board of Directors VPA Representative



**Angela Fritsch Harris, B.A. '03, Fine Arts**

My IPFW experience was great. The campus gave me the flexibility to work and go to school. The professors were smart, and they helped me achieve the degree I was looking for. The campus was close to home—and being a single mother at the time—that made everything a lot easier.

I chose to become an Alumni Association Board member because I wanted to be part of something special. There are so many things happening on campus, and I wanted to help out where I could.

I encourage graduates to join the IPFW Alumni Association because it's a wonderful experience with great people and a great university.

To learn about the benefits of joining the IPFW Alumni Association, visit the Alumni Relations Web site at [www.ipfw.edu/alumni](http://www.ipfw.edu/alumni). A one-year membership is \$40, or \$20 if you received your first degree within the last five years. To contact Alumni Relations, call 260-481-6807 or e-mail Susie at [prices@ipfw.edu](mailto:prices@ipfw.edu).

## 21 Years in the Making

By Steven T. Sarratore, Interim Dean  
College of Visual and Performing Arts

What a difference 21 years make! When I arrived on this campus in 1986, the theatre program was part of the communication department—located in the basement of Kettler Hall; the music department was hidden away in the lowest level of the Classroom-Medical Building; and the art department was still downtown, housed in an array of historical, but dilapidated, buildings.

The following year, 1987, was a watershed year, as all of the arts programs came together to form the School of Fine and Performing Arts, under the leadership of interim Dean James Ator. Later that year, Chancellor Tom Wallace announced plans to construct the new theatre and fine arts buildings on the north end of campus. Those buildings—now known as the Visual Arts Building and the Ernest E. Williams Theatre—opened in 1992 and 1993, respectively.

And now, in 2007, with the completion of the magnificent new John and Ruth Rhinehart Music Center, the renamed College of Visual and Performing Arts is housed in one of the finest arts complexes in the Midwest. We anticipate wonderful new opportunities as our departments explore the exciting possibilities that these superb facilities and our new proximity to each other offer.

There is also great excitement as three of our community arts partners prepare to take up residence on campus. The Fort Wayne Children's Choir, FAME, and the Unity Performing Arts Foundation will soon

be moving into their offices in The Rhinehart Music Center. We also look forward to continuing our long relationship with the Fort Wayne Community Band and strengthening our important relationship to the Fort Wayne Philharmonic.

And although we are pleased with our growth, we cannot stop for long to revel in our successes. Several new initiatives are already underway. Work is proceeding to enhance the quality and quantity of our academic programs. We are also working to develop indoor and outdoor spaces for arts exhibits and to enhance the technology necessary to educate and train our students on state-of-the-art equipment.

We are striving to develop additional scholarship support to assist our students as they pursue their educational goals.

Equally important, we continue to strive to be the Arts Education Center for northeast Indiana by offering music lessons and arts courses through our Community Arts Academy and by partnering with numerous community arts and service agencies. We are part of your community, and need you to be a part of ours.

Come and join us on the north end of the IPFW campus. Our outstanding array of theatre, dance and music performances, art exhibits, credit and non-credit courses, and other activities offer something for almost everyone. Then you can marvel, as I have, at what a difference 21 years make.

The John and Ruth Rhinehart Music Center

■ See pages 6 and 7

Fenster/continued from front

He has become the teacher that, as a student, he had hoped to find. Beginning his teaching career at UW–Madison in 1962, he has been a primary force in the wave of renewed interest in metal work in recent times, especially in pewter. It is not improbable that every pewter worker around today crossed paths with Fenster at some point, whether at UW–Madison, the Penland School of Crafts, or in one of many of his workshops across the country.

We, at IPFW, have a special connection with Fenster. Les Motz, the former chair of the Department of Fine Arts, began to offer metalsmithing classes at the Fort Wayne Art School in 1961. He received a B.F.A. with a major in

metalsmithing and a minor in sculpture from Cranbrook in 1959, and then stayed to complete an M.F.A. in metalsmithing in 1961 when he and Fenster were classmates. Fenster even went along with Motz when the latter returned to Fort Wayne to deliver and install a commission for Concordia Theological Seminary.

With this shared history in mind, the Pewtersmithing Workshop and Exhibition of Fred Fenster's works at the school where his colleague, Motz, began the metalsmithing program is a fitting tribute to the history they shared in this exciting field of teaching and art making.



▲ Metalsmith Fred Fenster at work in his studio.

## contact VPA

[www.ipfw.edu/vpa](http://www.ipfw.edu/vpa)

Steven T. Sarratore, *interim dean* 260-481-6977  
 Barbara J. Resch, *associate dean* 260-481-6977  
 Barbara K. Romines, *business manager* 260-481-6959  
 Susan Domer, *marketing and public relations* 260-481-6025  
 Maggie Hunter, *assistant to the dean, director of the IPFW Community Arts Academy* 260-481-6059  
 Gary Lanier, *secretary* 260-481-6977  
 Leslie VanderHart, *Web designer* 260-481-6098  
 Theatre Box Office 260-481-6555  
 Text Telephone Device (TTD) 260-481-4105  
 Department of Theatre 260-481-6551  
 Department of Music 260-481-6714  
 Department of Fine Arts 260-481-6705  
 Department of Visual Communication and Design 260-481-6709

**Newsletter Editor**  
 Susan Domer

**Design and Editing**  
 IPFW Publications

**Arts Writers**  
 Steven T. Sarratore  
 Susan Domer  
 Richard Grzych  
 Robert F. Schroeder

The IPFW College of Visual and Performing Arts would like to thank our season sponsors for their support:



**Visual and Performing Arts**  
 Indiana University–Purdue University Fort Wayne  
 2101 E. Coliseum Blvd.  
 Fort Wayne, IN 46805-1499

NON-PROFIT ORG.  
 U.S. POSTAGE  
**PAID**  
 FORT WAYNE, IN  
 PERMIT NO. 92

Shakespeare/continued from front

segments and physical comedy to get his love of Shakespeare across. Often times using volunteers from the audience, the actors present scenes filled with contemporary, trendy idioms that the high school students can relate to because the theatre majors bring those choices to the rehearsal process.

"It's all very approachable and funny for students, almost like a Shakespeare *Unplugged*. It's presented by actors that high school students can relate to," O'Connell added. "One of my goals is to get local high school students excited about theatre again."

Don't miss this opportunity to have history come alive for your students. To schedule a presentation of *Brush Up Your Shakespeare* for your school, call the Department of Theatre at 260-481-6551.

## Everyday Idioms

Have you ever quoted Shakespeare? Not sure? Scared to find out? Shakespeare's language has become so much a part of our everyday lives we scarcely know the difference. If you've ever used any of the following phrases, you have indeed, somewhere along the line, been quoting The Bard.

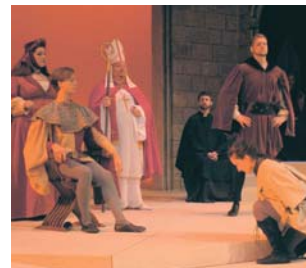
"It's Greek to me"	"Seen better days"
"Vanished into thin air"	"Lived in a fool's paradise"
"Refused to budge an inch"	"Bag and baggage"
"Played fast and loose"	"It is high time"
"Tongue tied"	"That is the long and short of it"
"A tower of strength"	"Own flesh and blood"
"Hoodwinked"	"Foul play"
"In a pickle"	"Without rhyme or reason"
"Knitted your brows"	"To give the devil his due"
"Made a virtue of necessity"	"Good riddance"
"Fair play"	"Dead as a doornail"
"Slept not one wink"	"An eyesore"
"Stood on ceremony"	"A laughing stock"
"Laughed yourself into stitches"	"The devil incarnate"
"Too much of a good thing"	"A blinking idiot"



▲ The first annual Madrigal Dinner, presented by the Department of Music, was a great success.



▲ Natalie L. Wray, Andrew Welch, Lizz Frick, and Paige Romer perform in "Commercial Break" in Purely Dance 2007.



▲ *The Lark*, featuring Stephanie Vanderwall in the lead for her senior project, opened the IPFW Department of Theatre season in September.